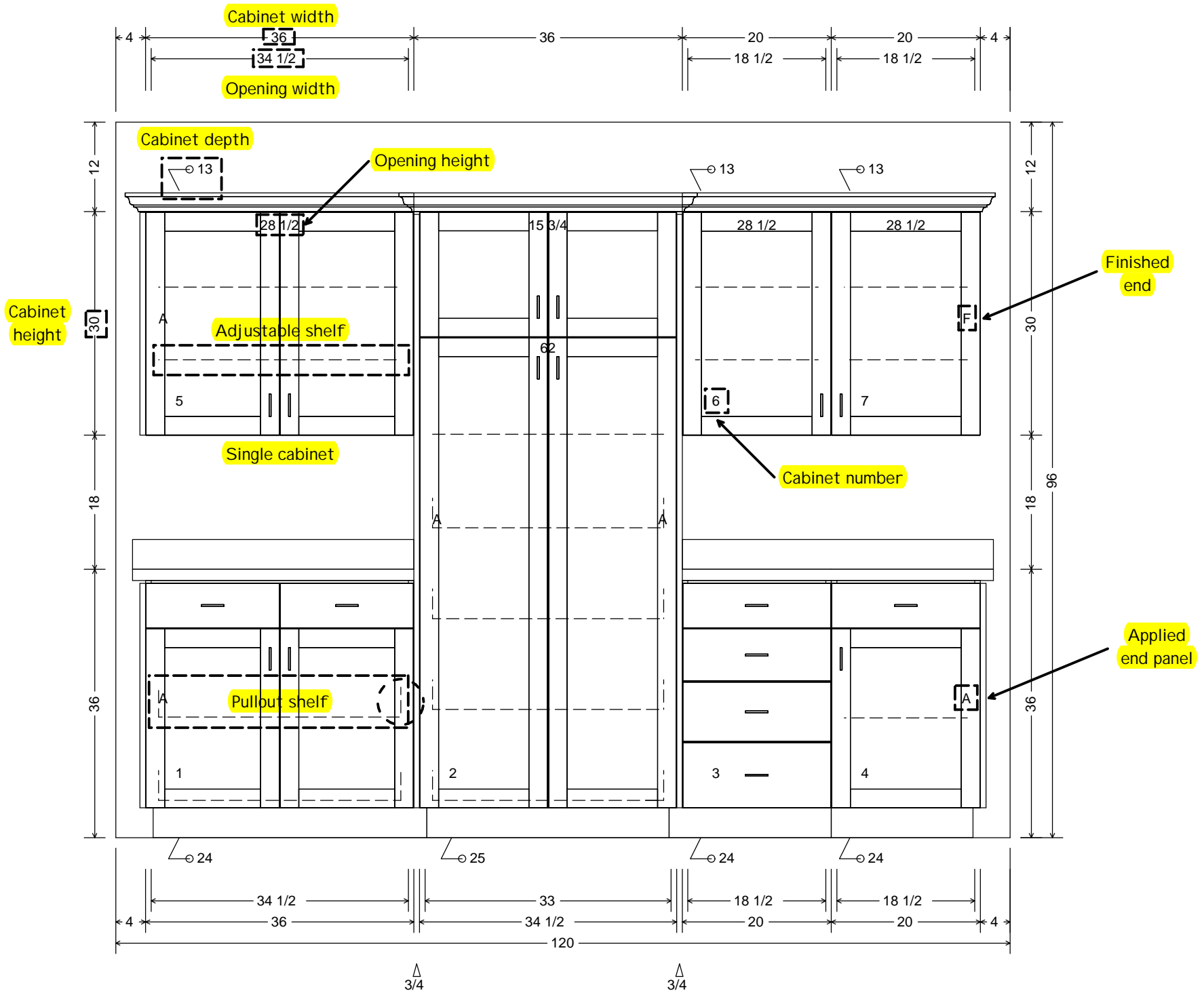
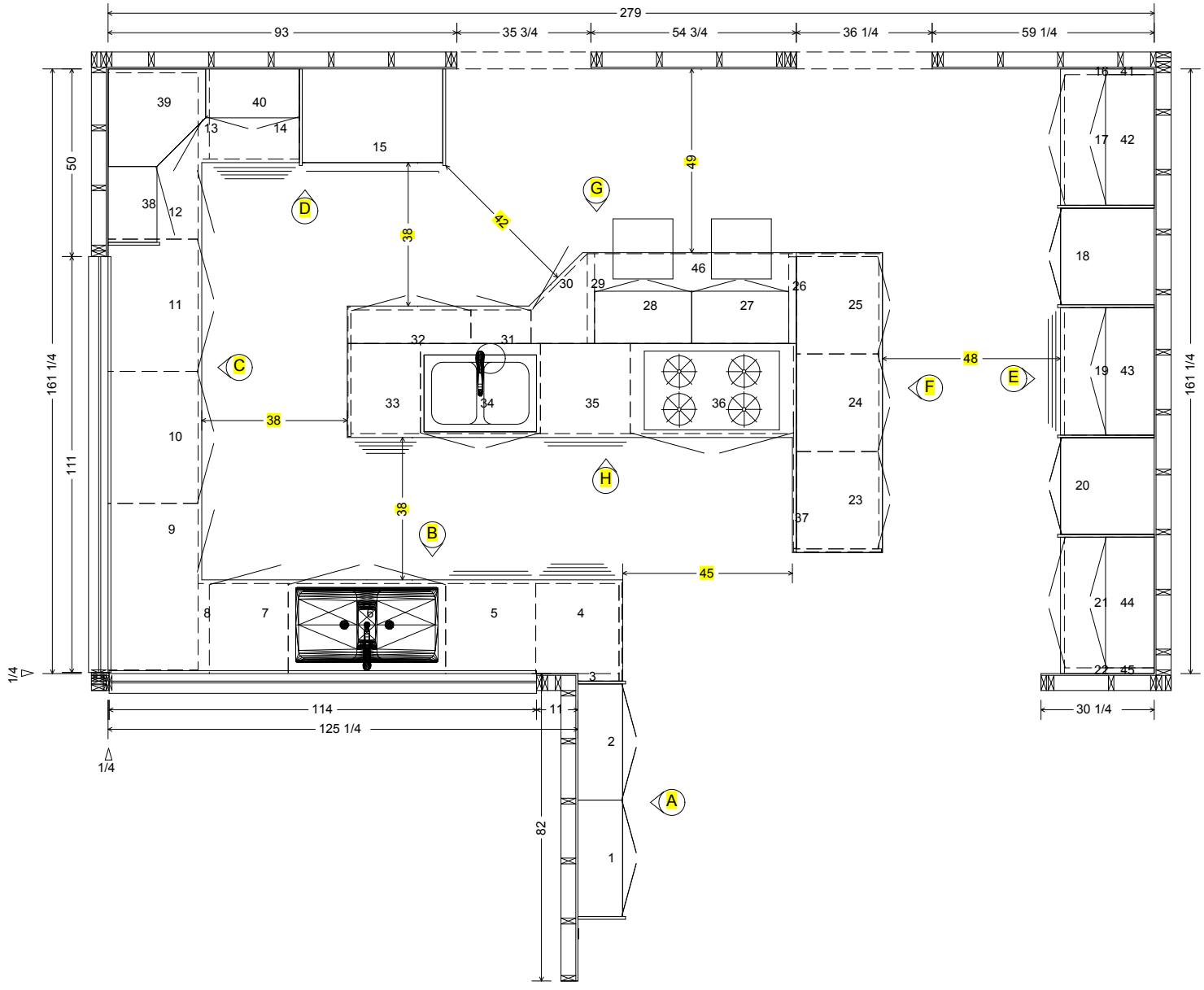


This is an example of what the floorplan and elevation pages mean for the different symbols.

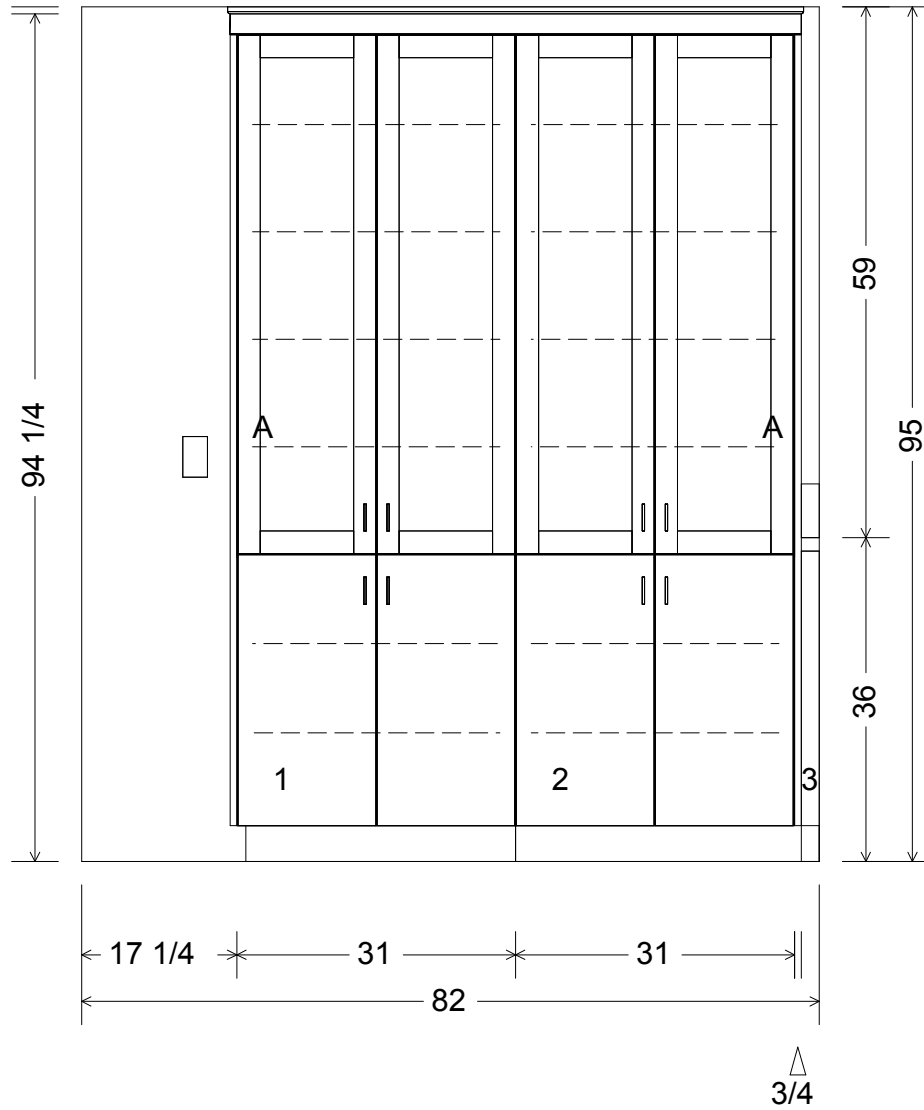
Some information may not show on your views.
Paid designs will have all information included.

You may contact me for a complete design cost.





Elevation A

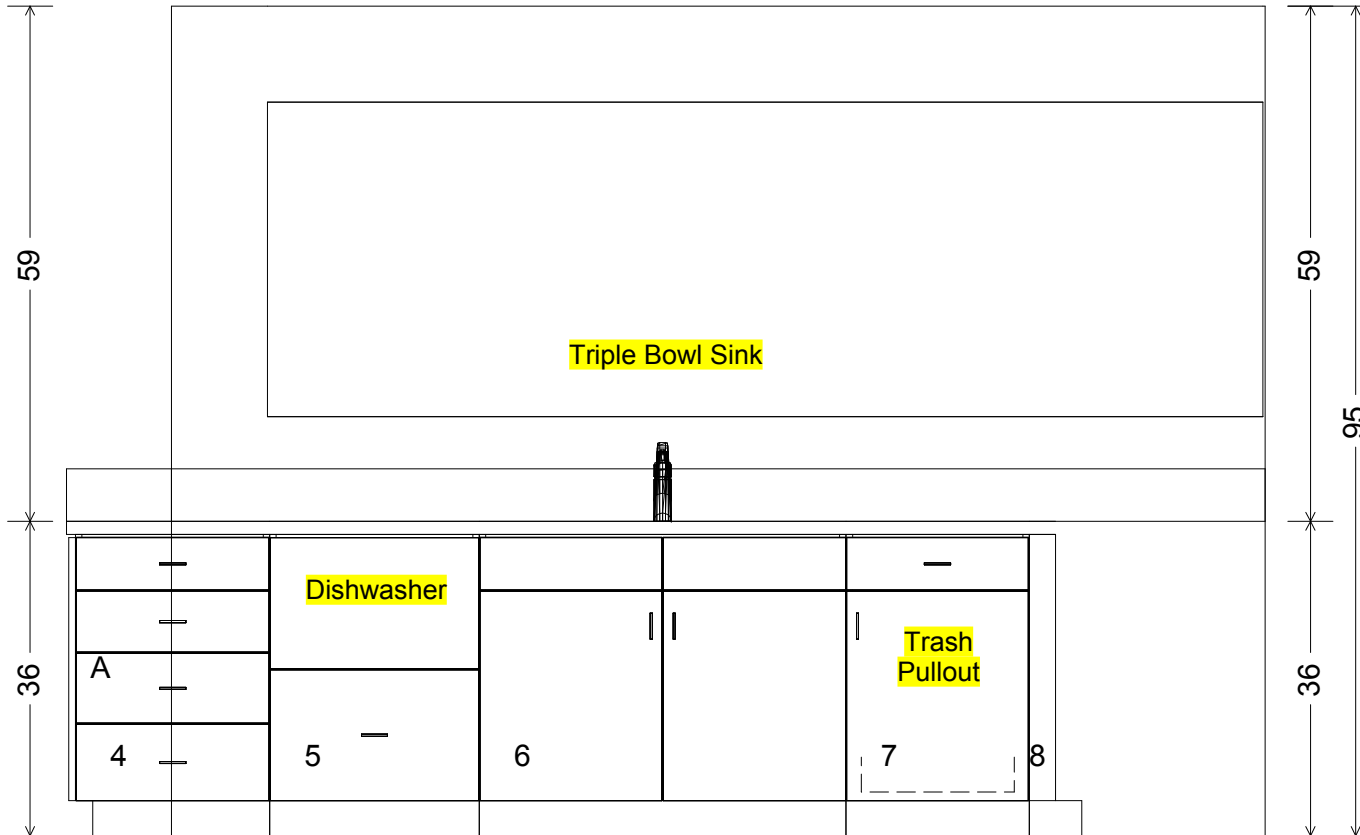


Glass doors
Wood interior
w/wood shelves

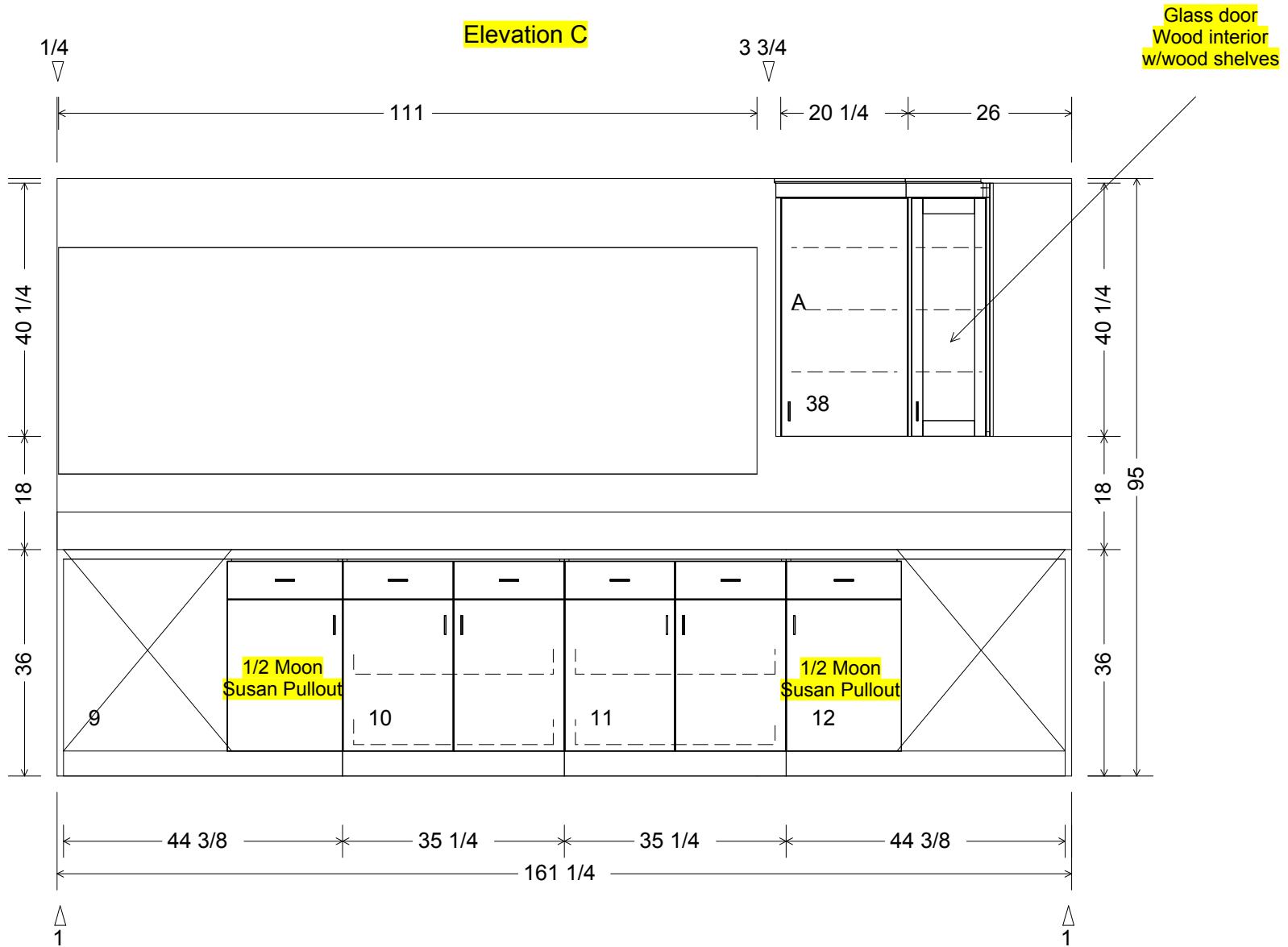
Elevation B

1/4
▽

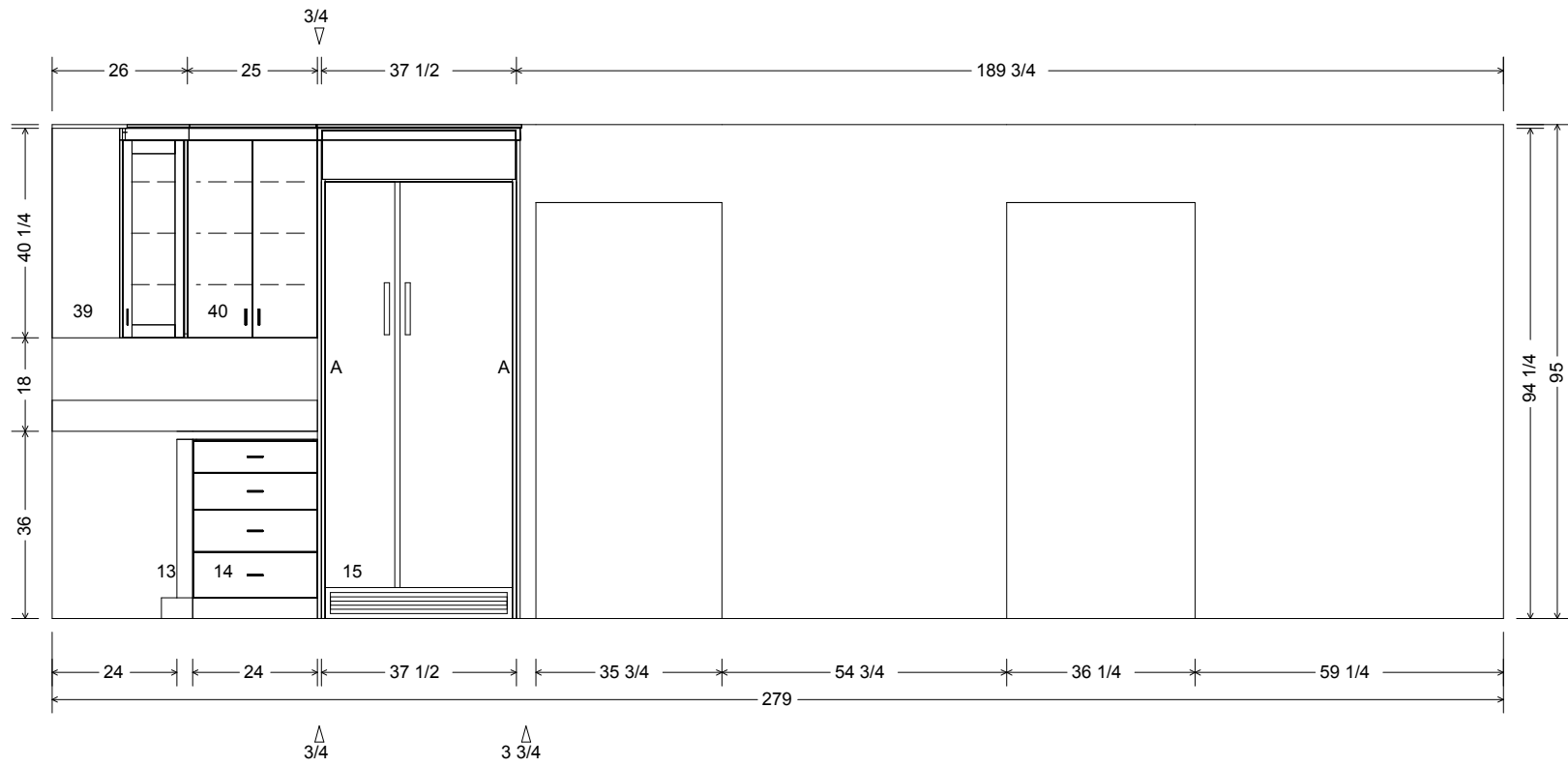
11 114



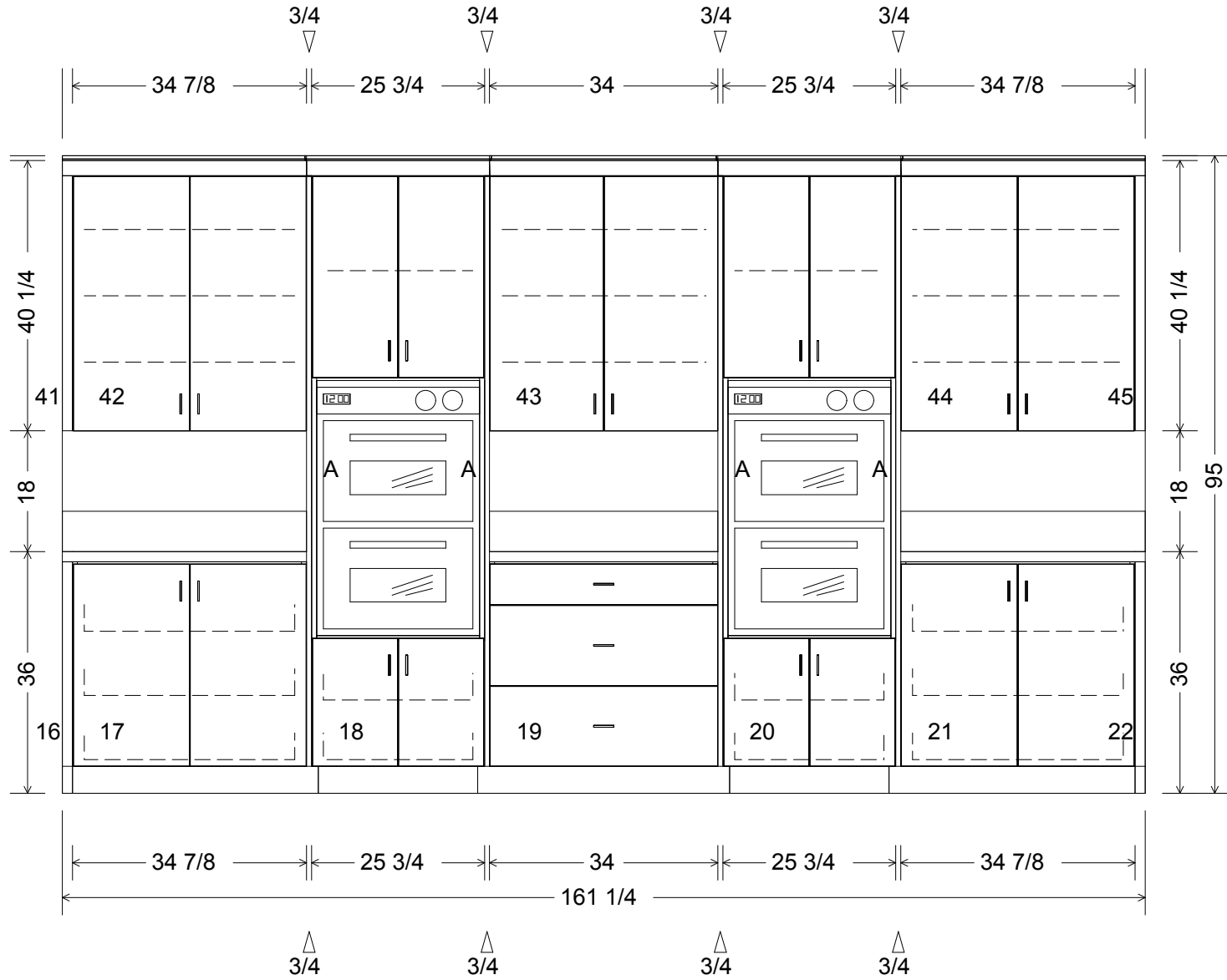
22 1/4 24 42 21 24 125 1/4

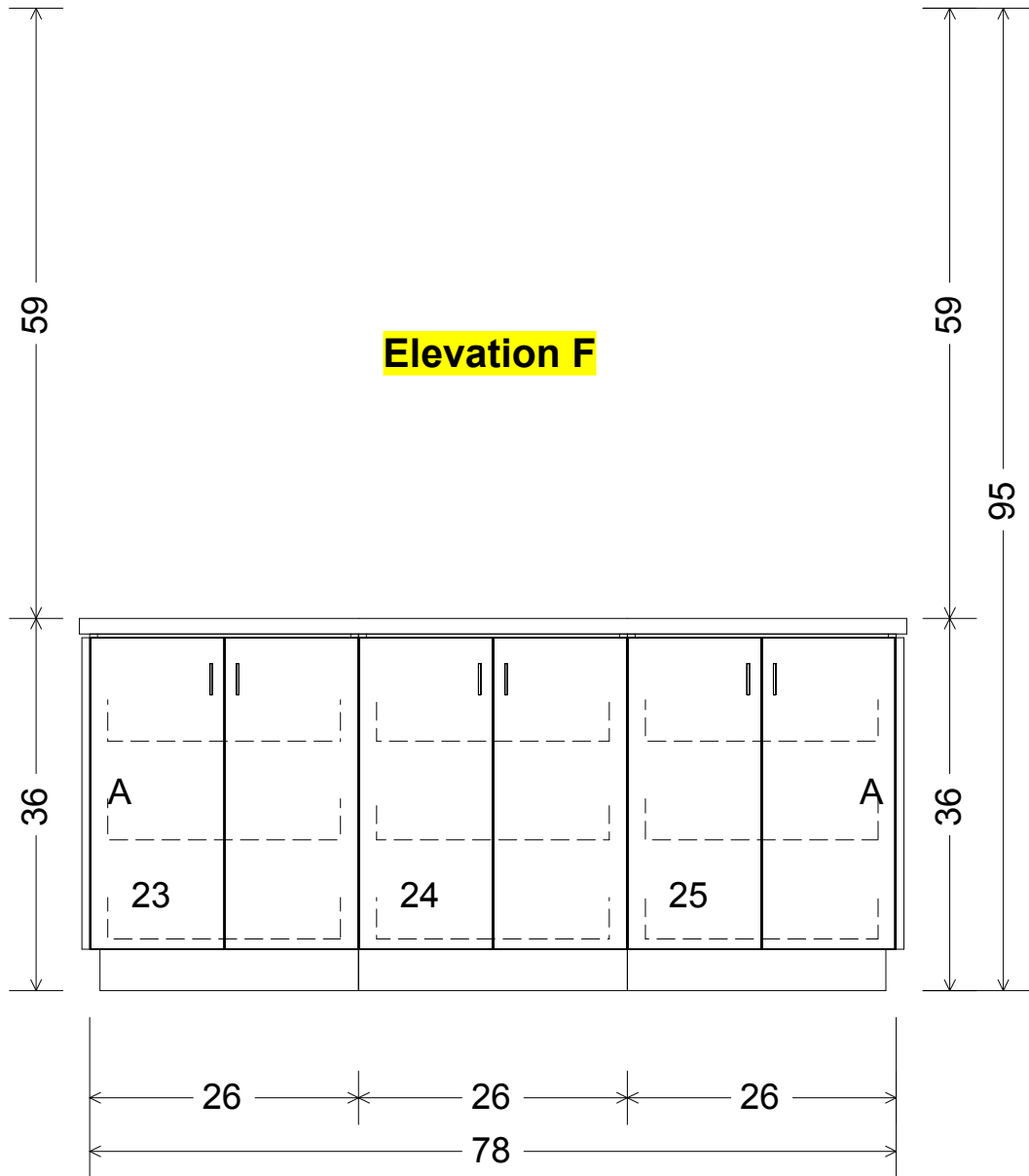


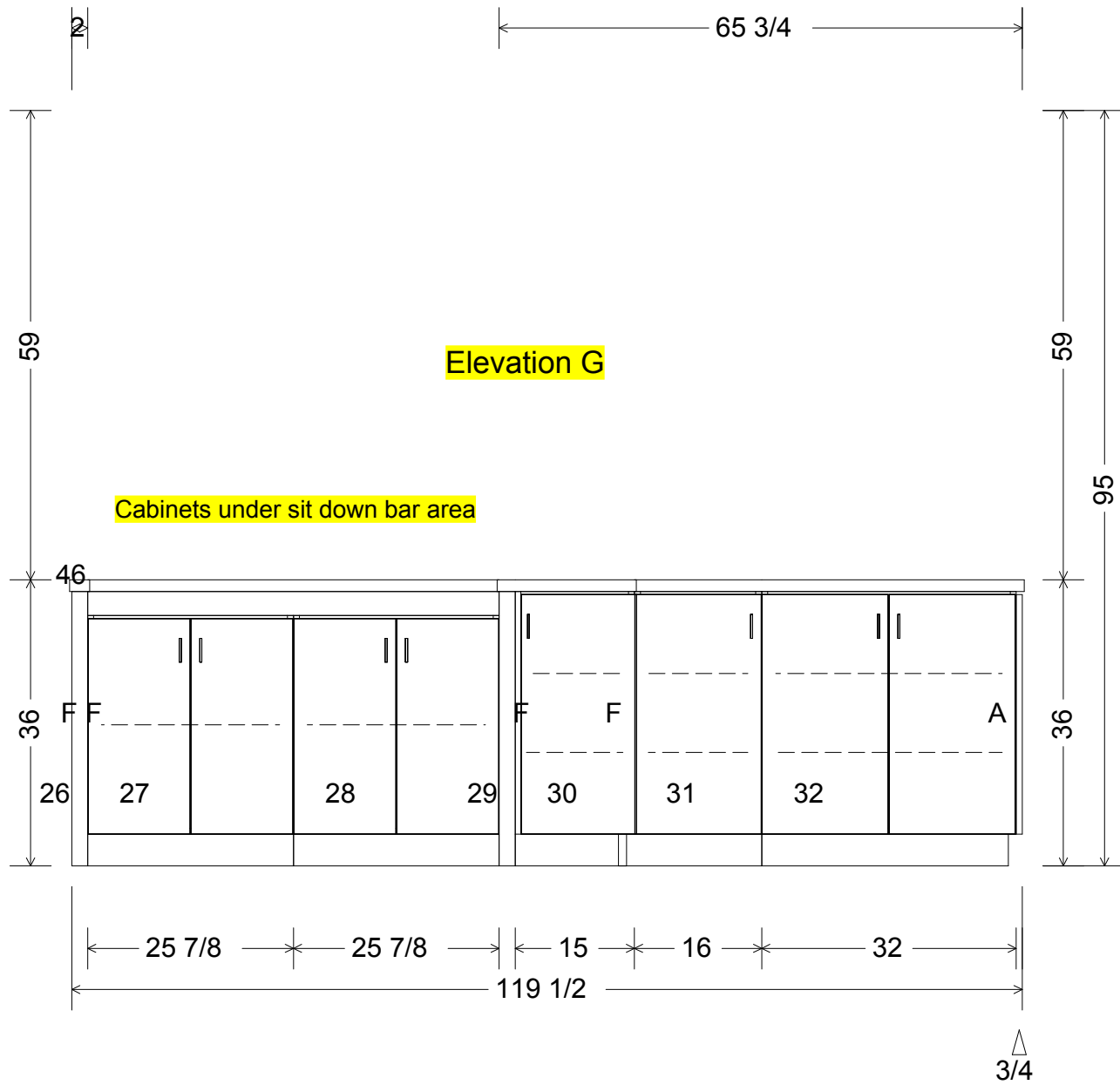
Elevation D

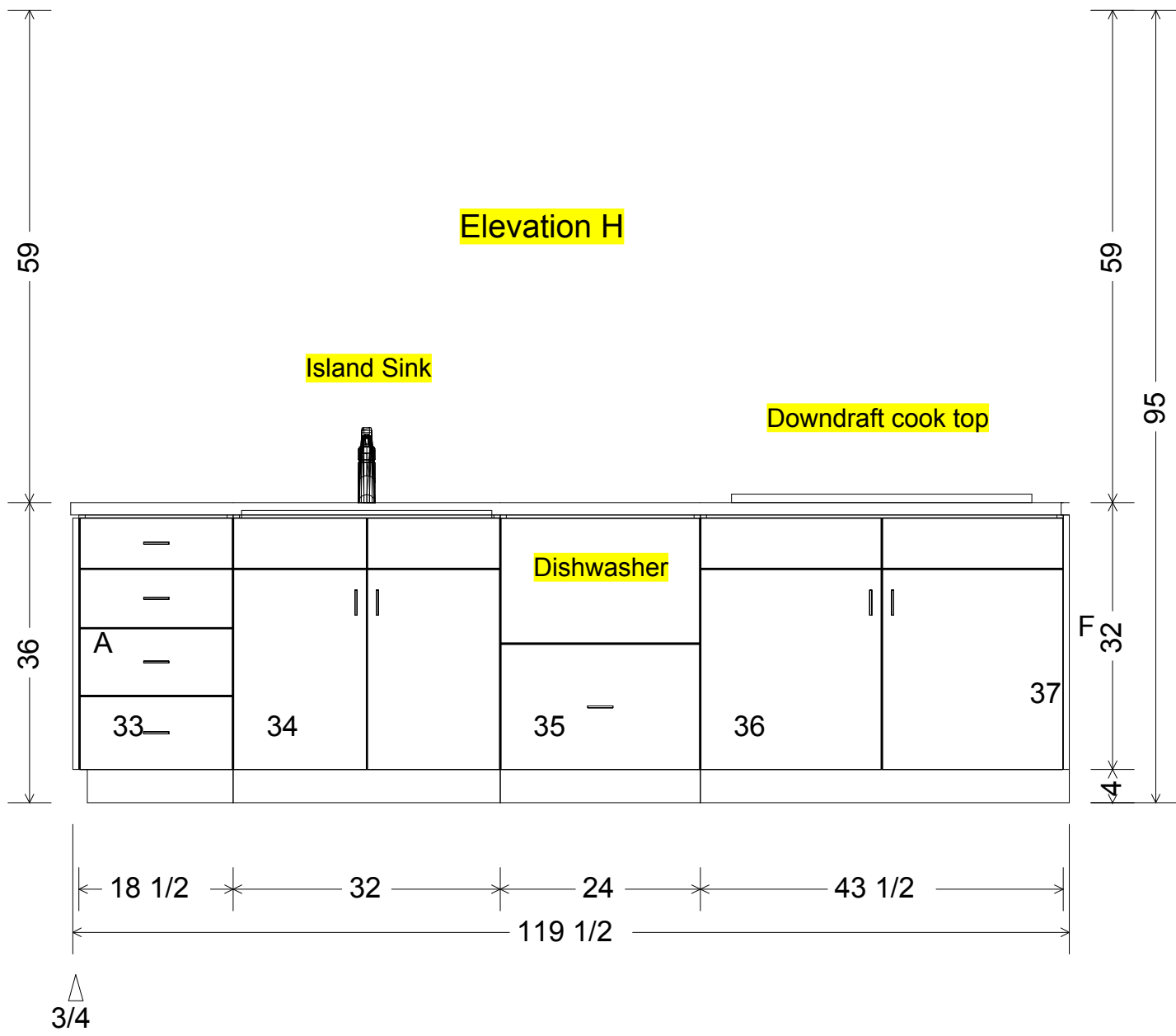


Elevation E









Please show proof of “current and valid” California State License.

Bid job with all these specifications so client can compare bids accurately.

You may submit alternate options after bidding to specifications.

Specifications:

1. 3/4" Hard Rock Maple Melamine interiors.
2. 3/4" Select White Maple Plywood exteriors.
3. Drees Doors (Oslo #95) or Decore-Active Specialties Doors (Brookhurst #90)
4. Glass door cabinets to have plywood interiors stained to match exteriors
5. 1/8" Double Strength clear glass installed.
6. 9- Ply Baltic Birch Pre Finished dovetailed drawers with Blum Tandem Plus Blumotion Guides.
7. 9- Ply Baltic Birch Pre Finished dovetailed pullout shelves
with Accuride Full Extension 3832 - 22" Drawer Guides.
8. Blum Clip Top Blumotion Soft Close hinges.
9. Trash Pullout Rev-A-Shelf RV-18KD-17C
10. Corner Susan Pullouts Rev-A-Shelf 6882-33-15-570
11. Both Dishwasher Drawers to have cabinet doors applied and large drawer cabinet below.
12. Cabinets # 10-11-17-18-20-21-23-24-25 all to have pullout shelves. See elev. For quantities.
13. All cabinets to be stained and glazed to a uniform color per customer choice.
14. If you charge State Taxes make sure they are included on your written proposal.
15. Winning bidder to submit floorplan, elevations and detailed drawings before starting job.