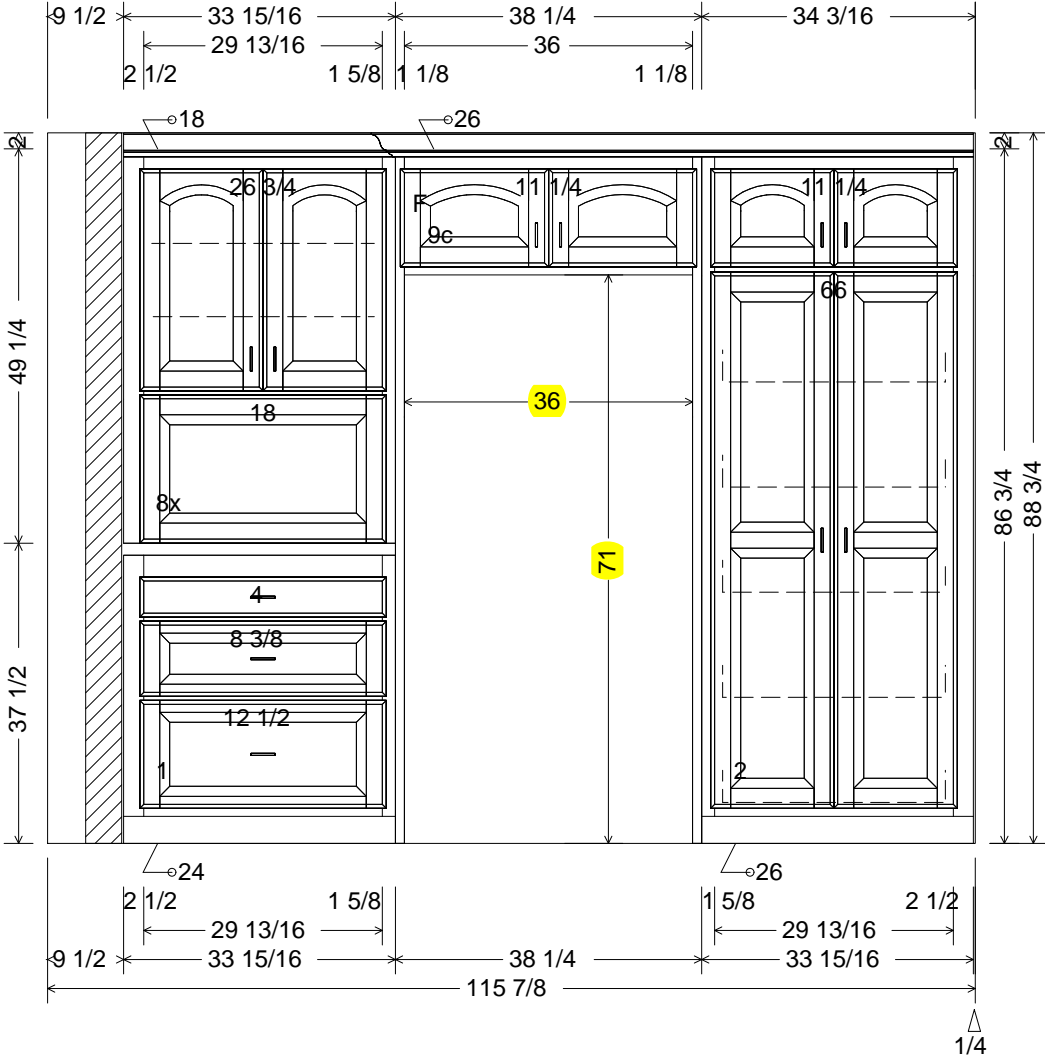
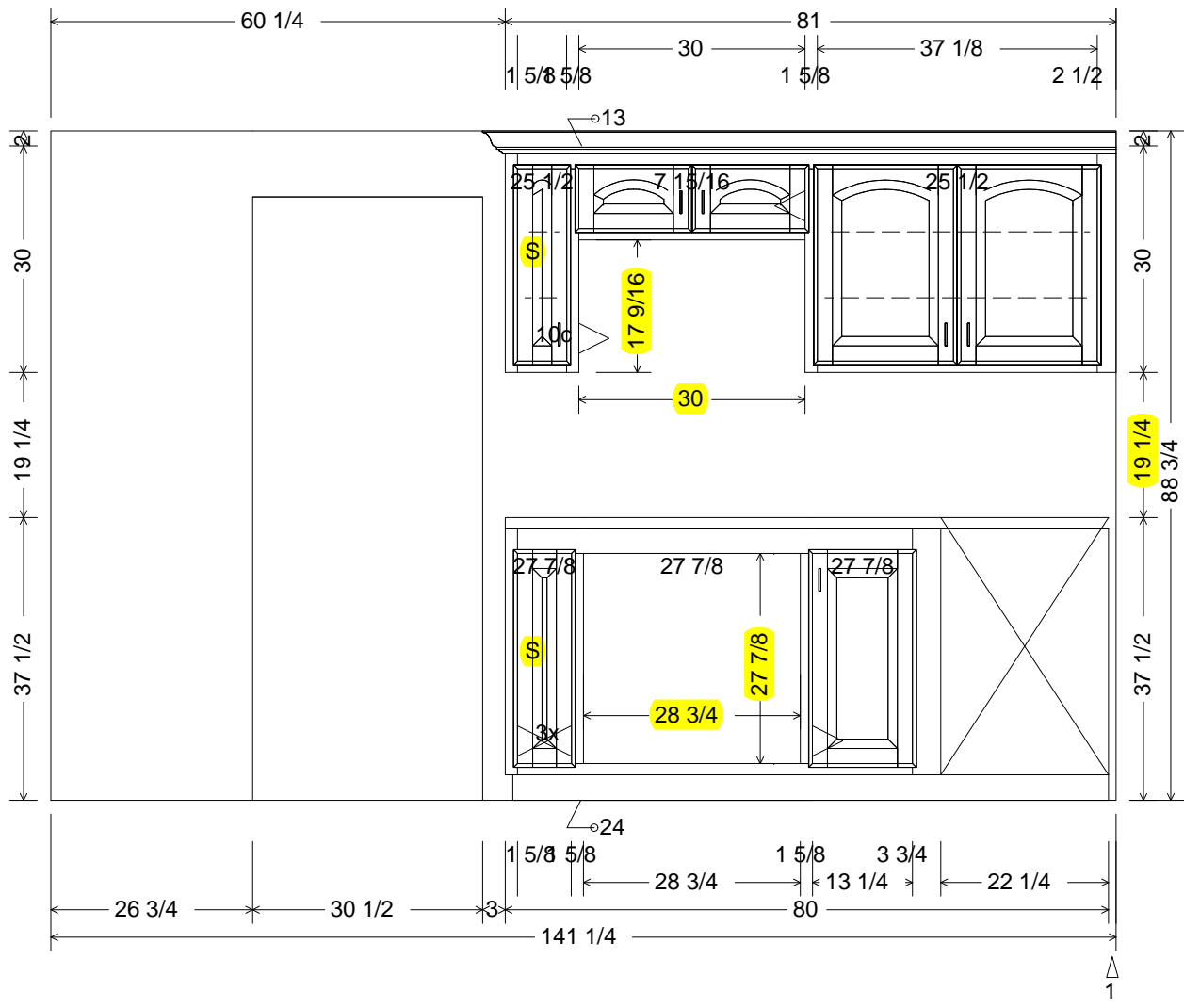
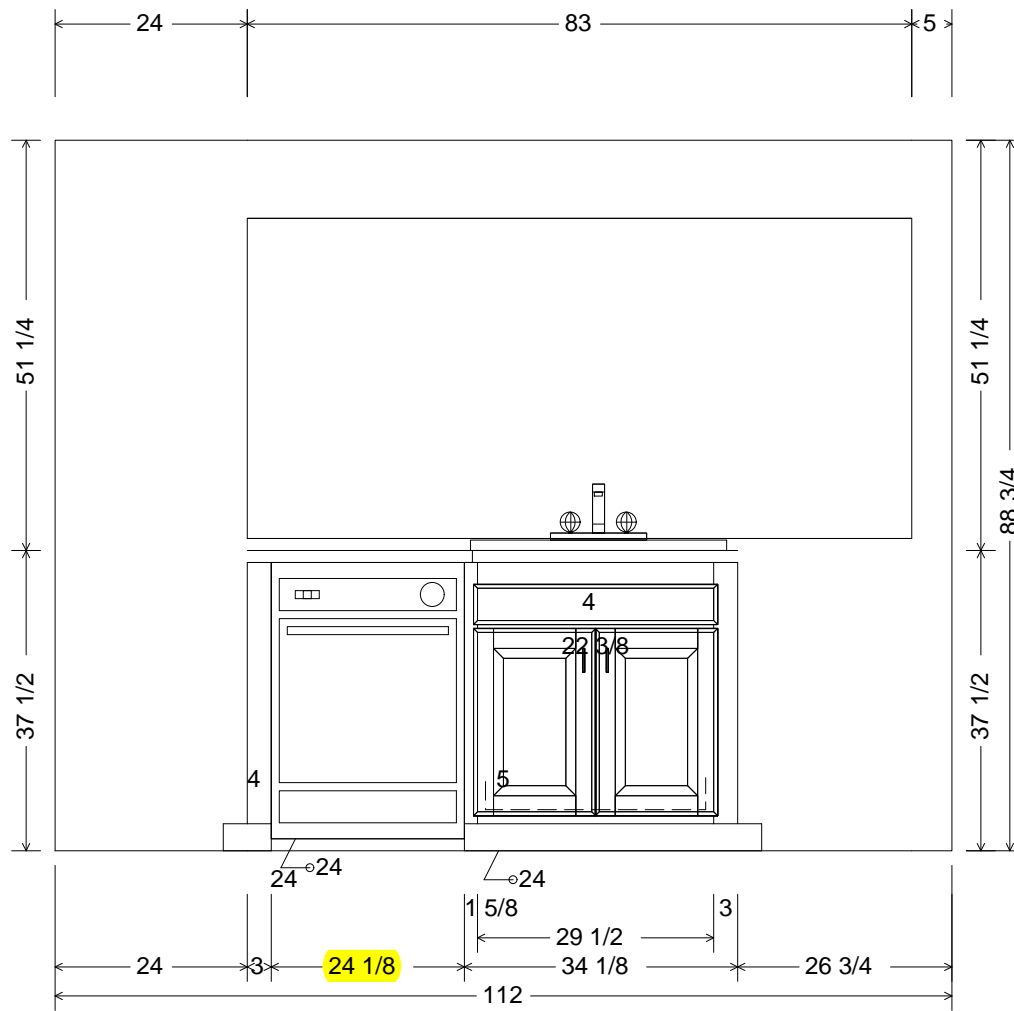


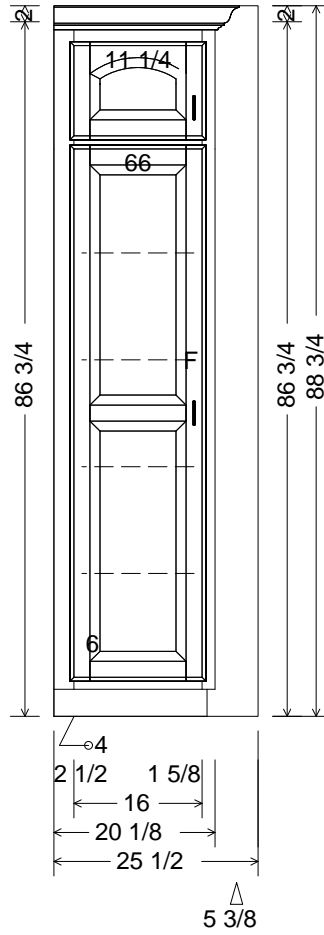
break back with alder at bottom  
 add 1/4 alder side skins

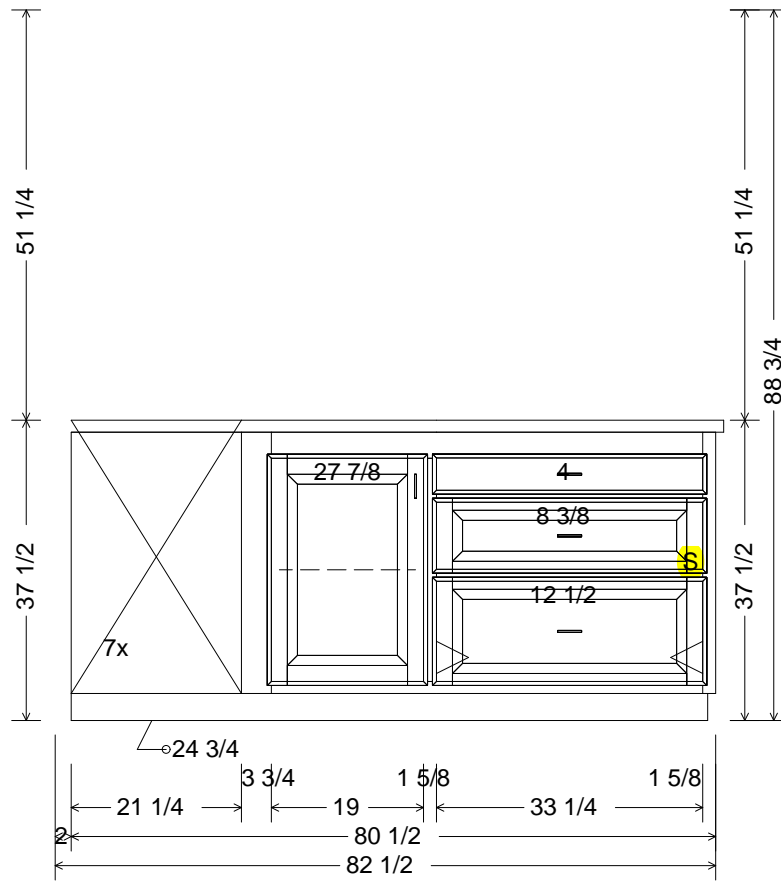


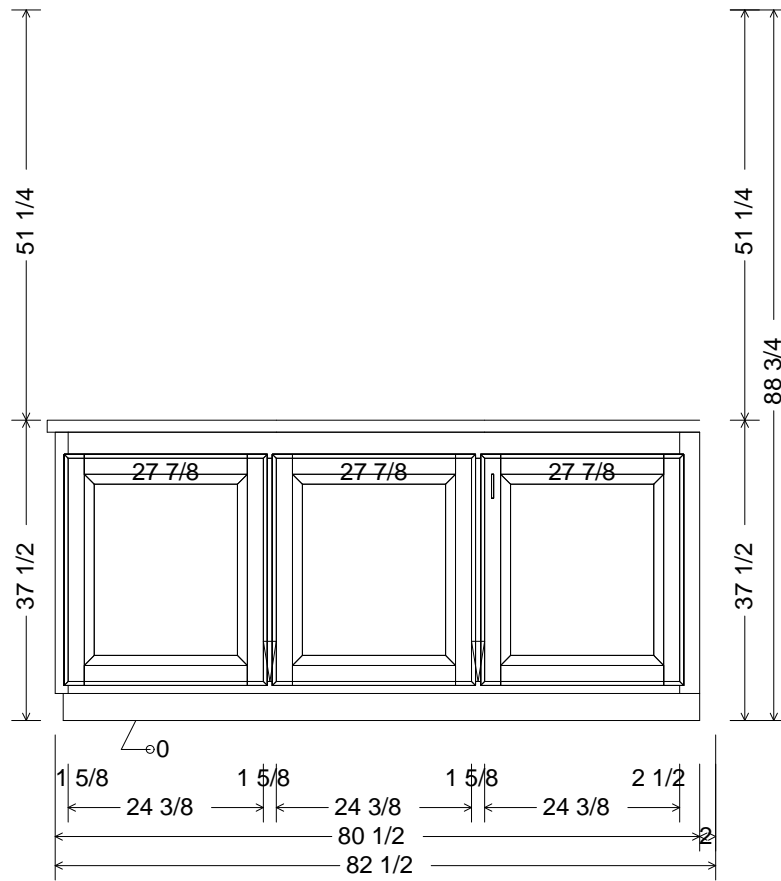


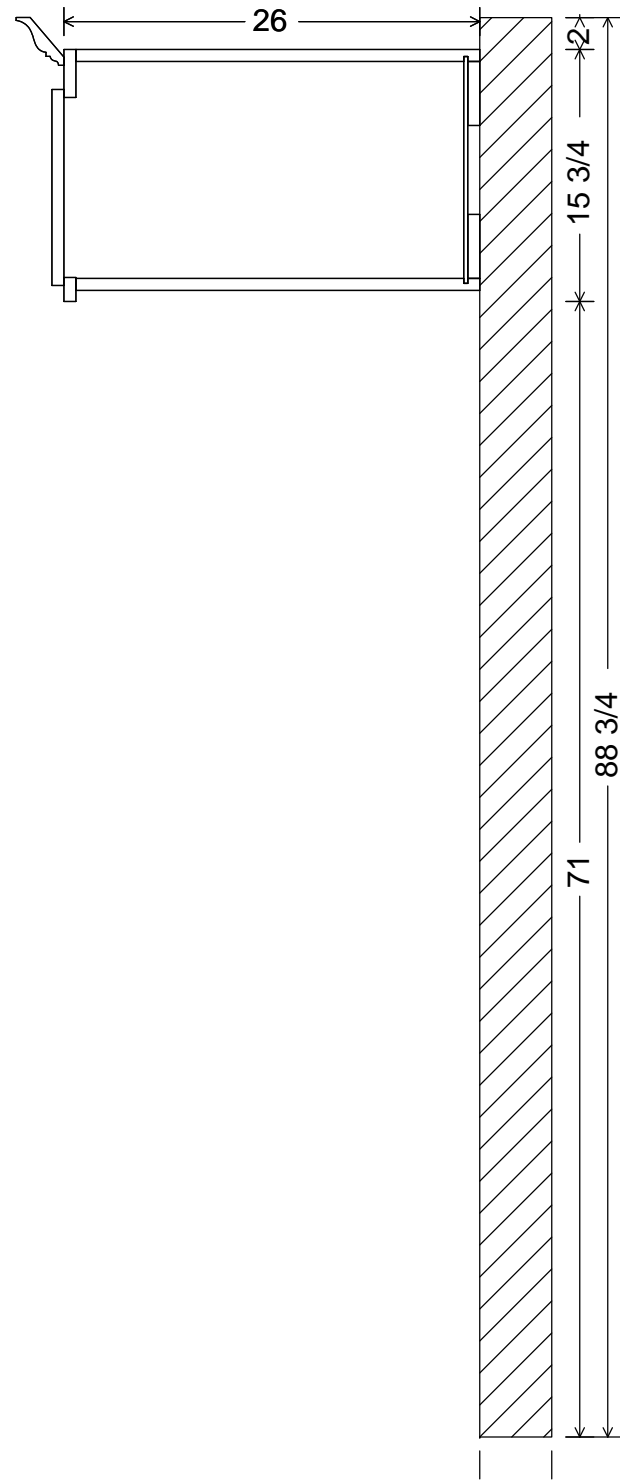
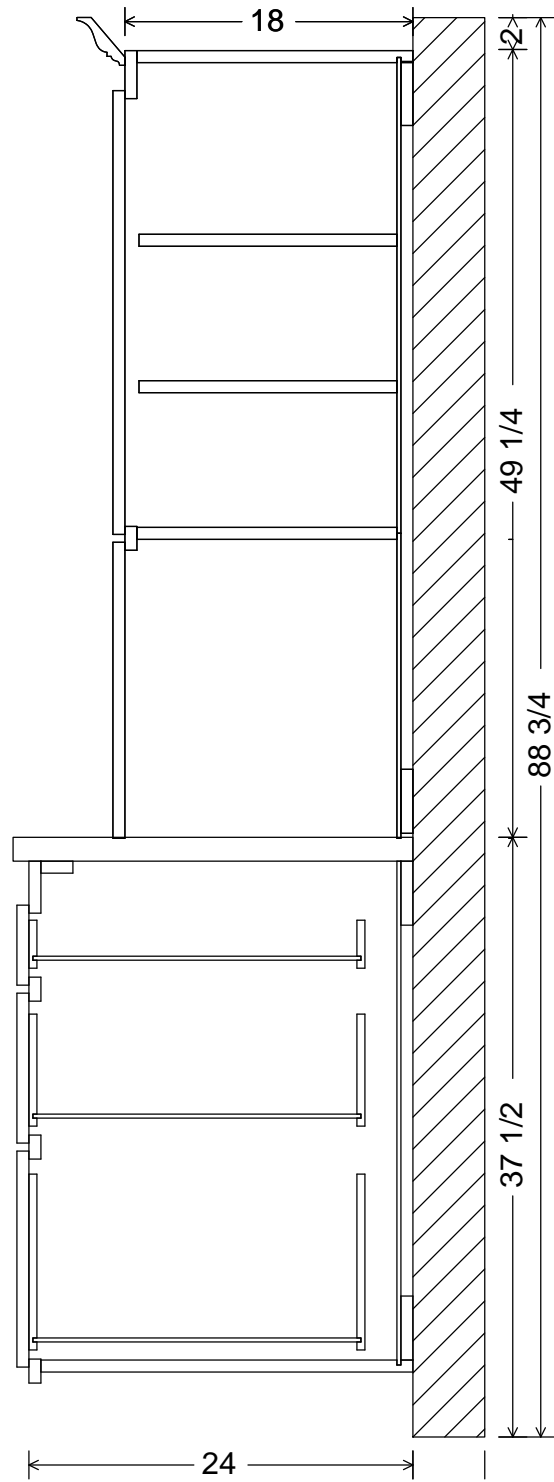
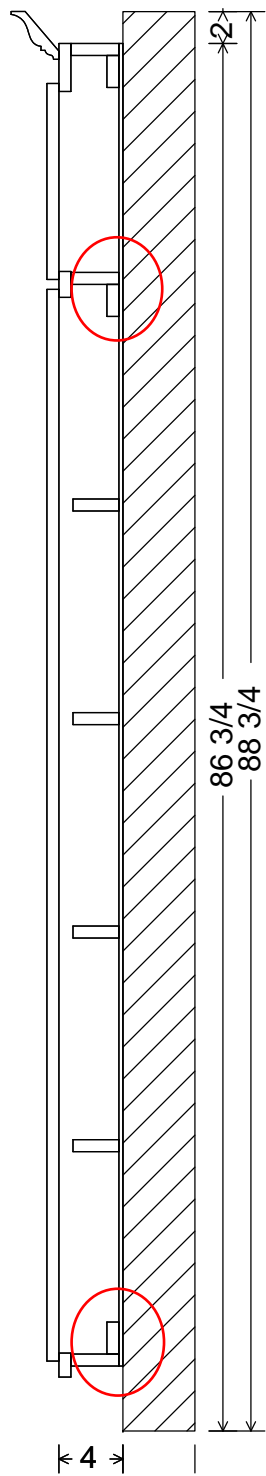


Make back overlay  
with nailers inside

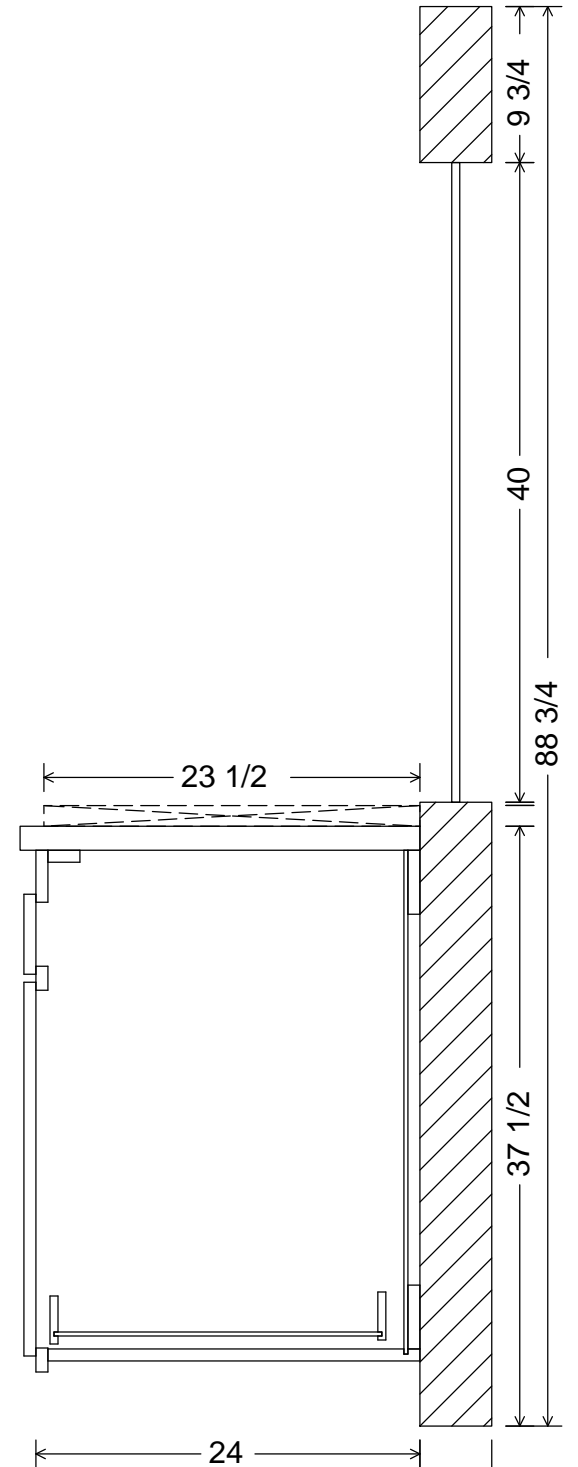
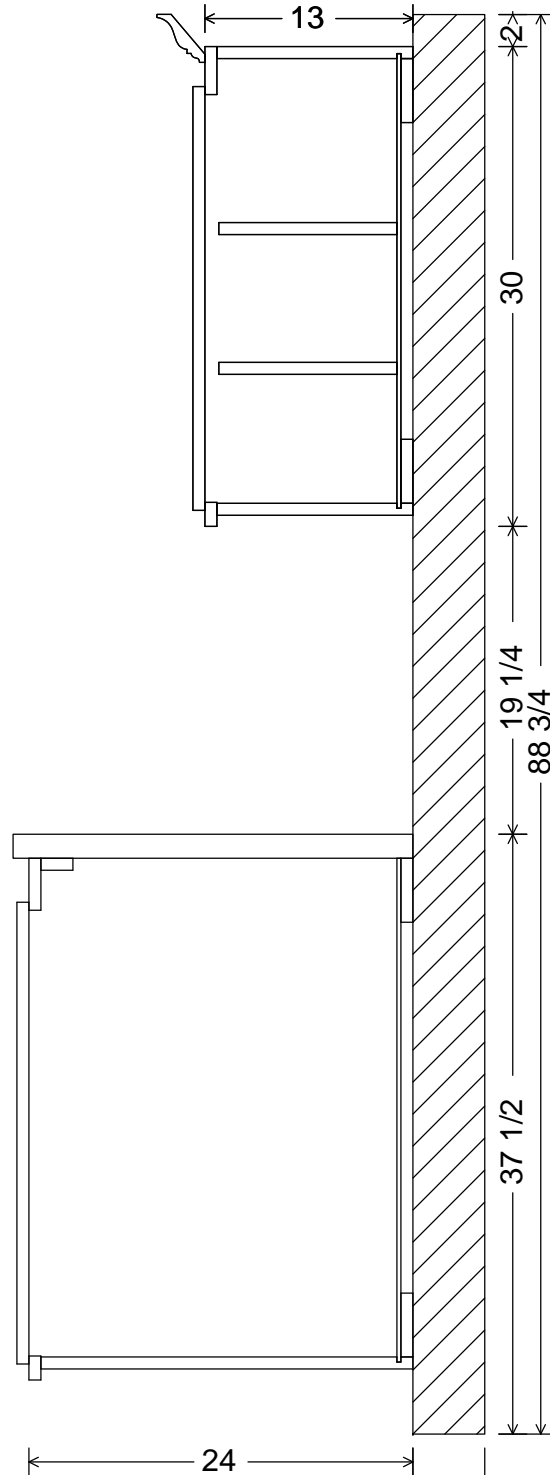
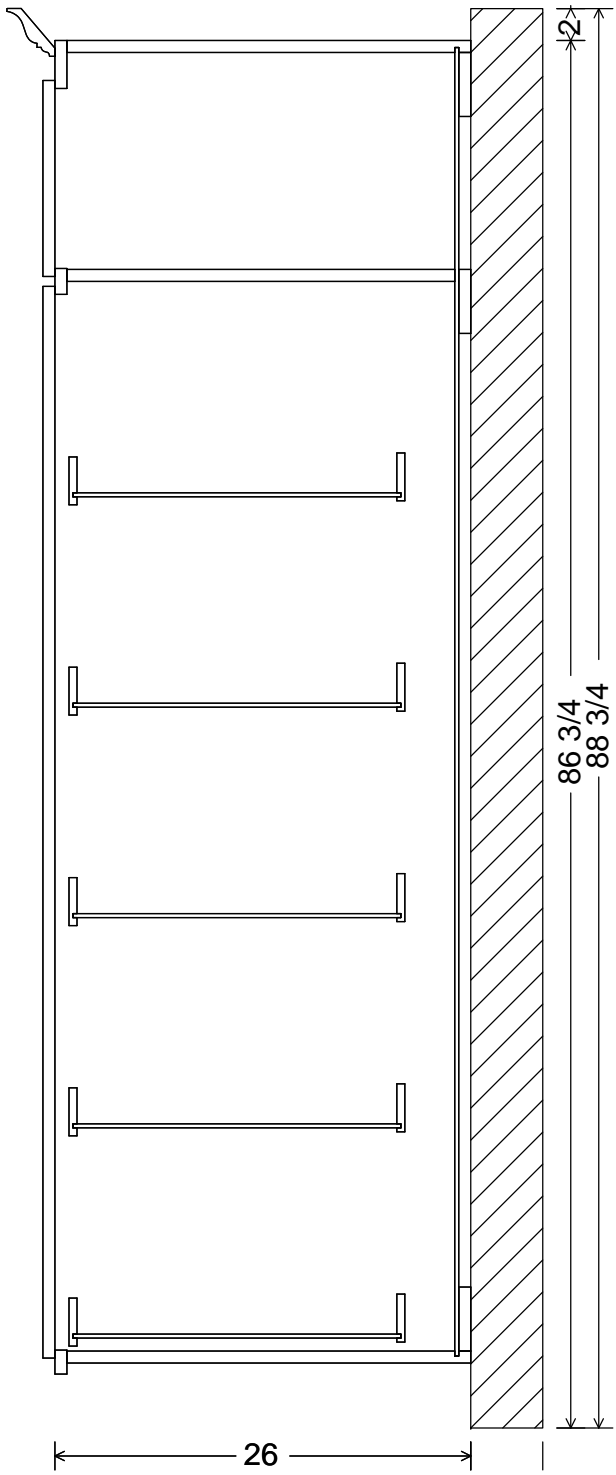




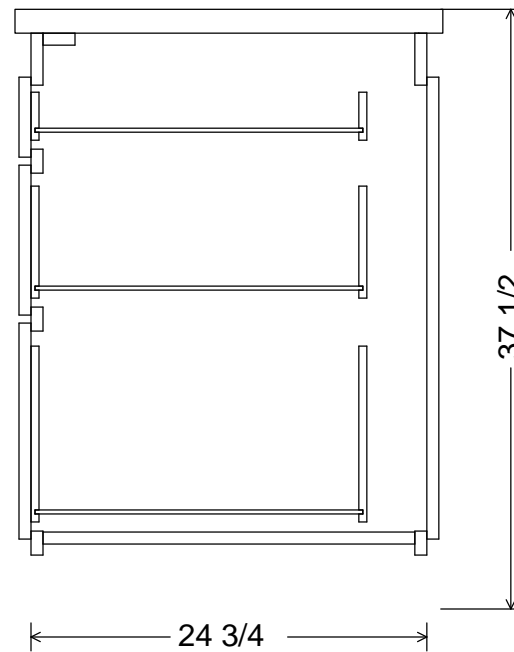
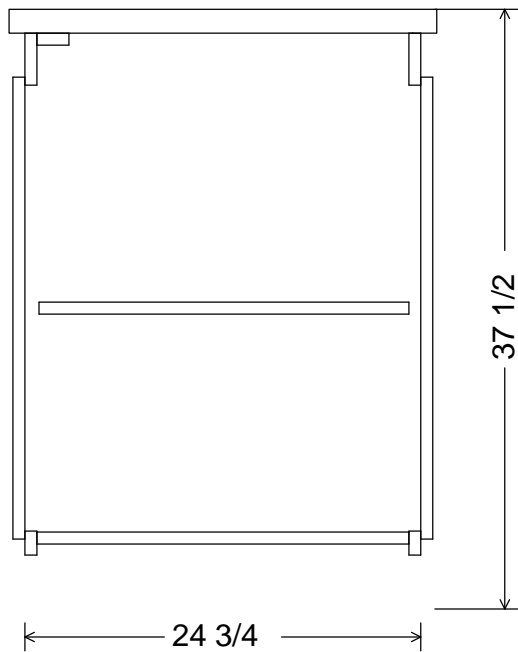


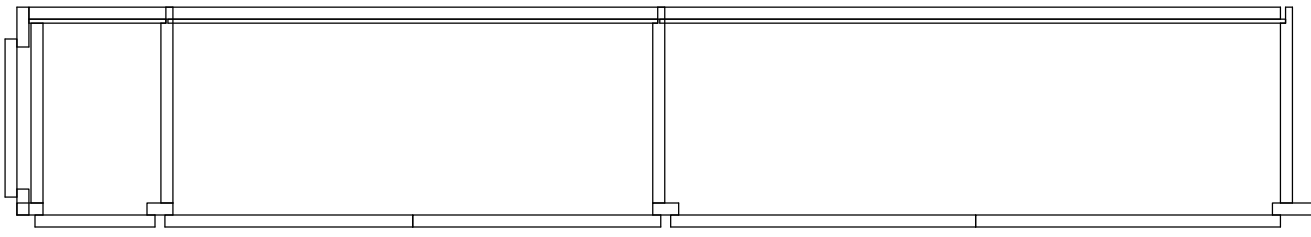
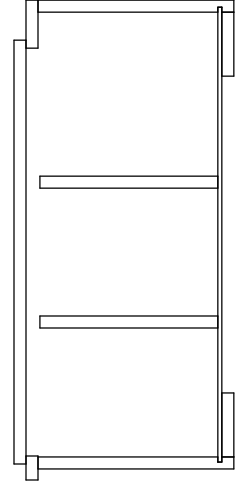
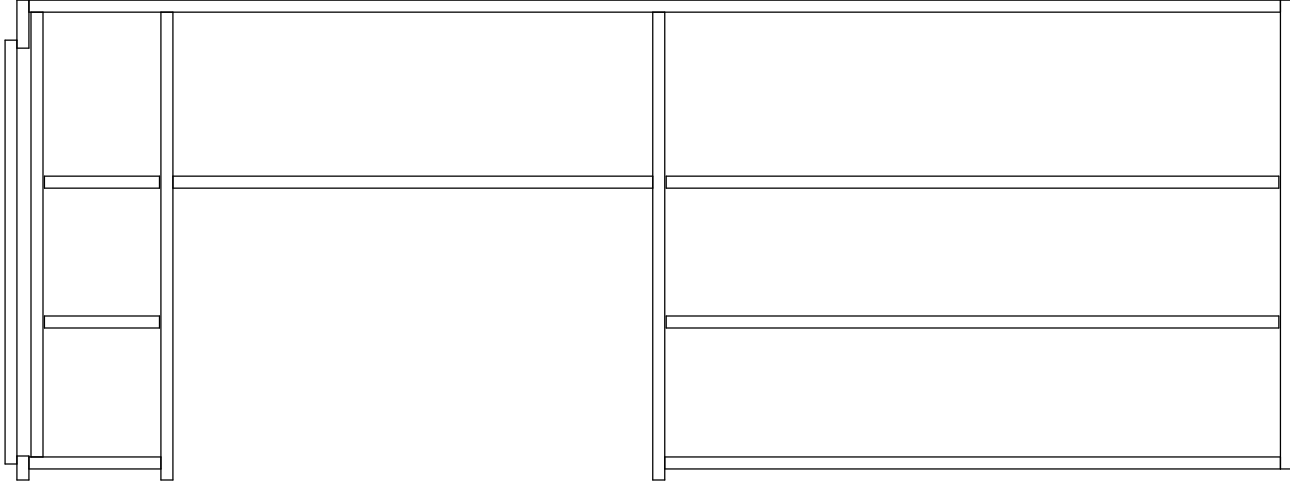




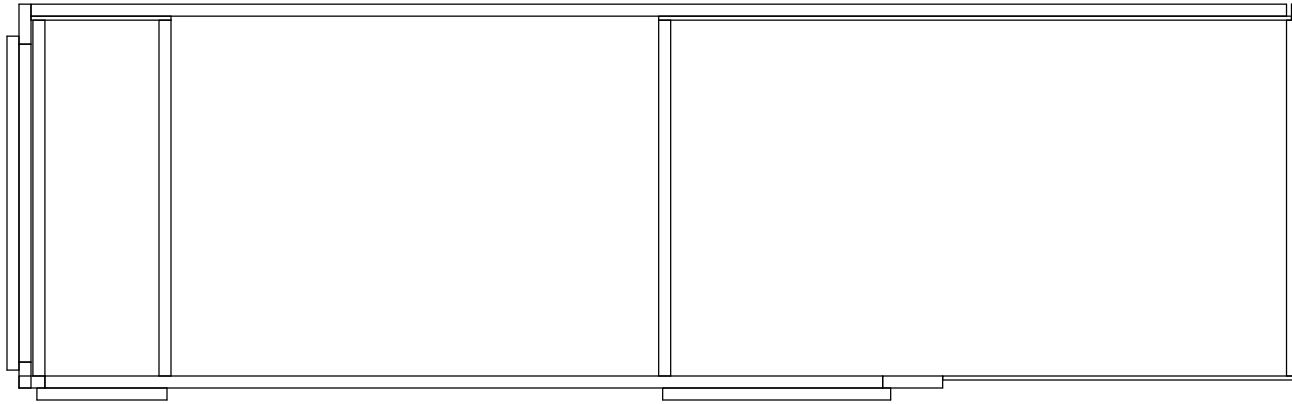
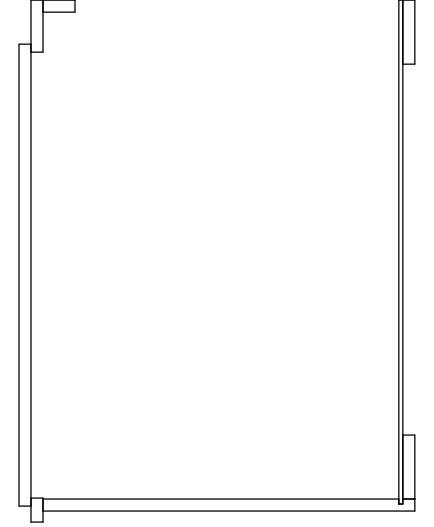
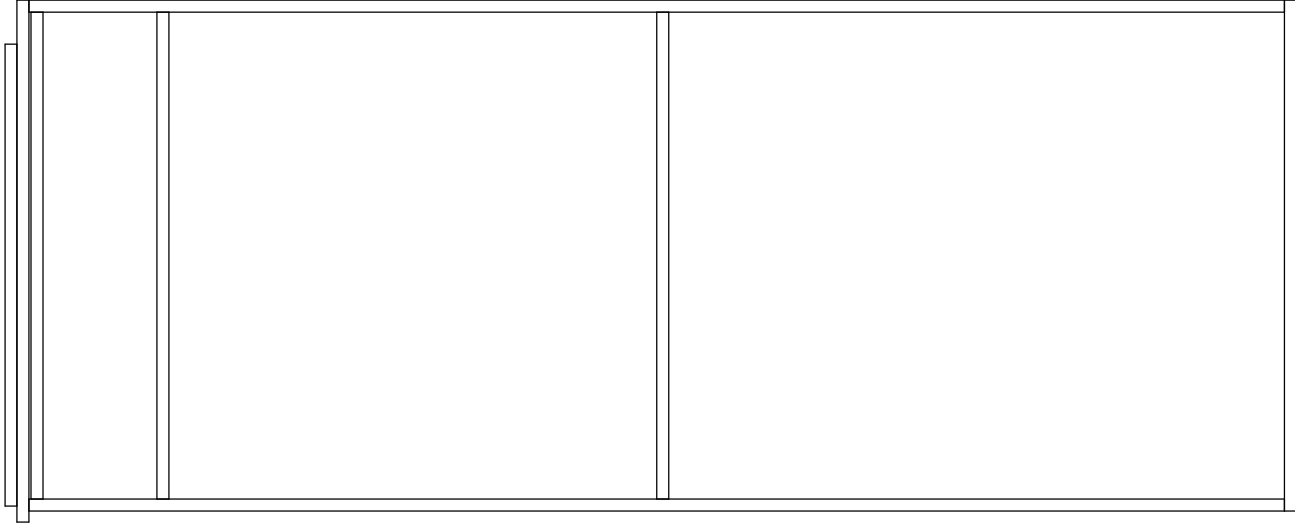


# Peninsula Cabinet

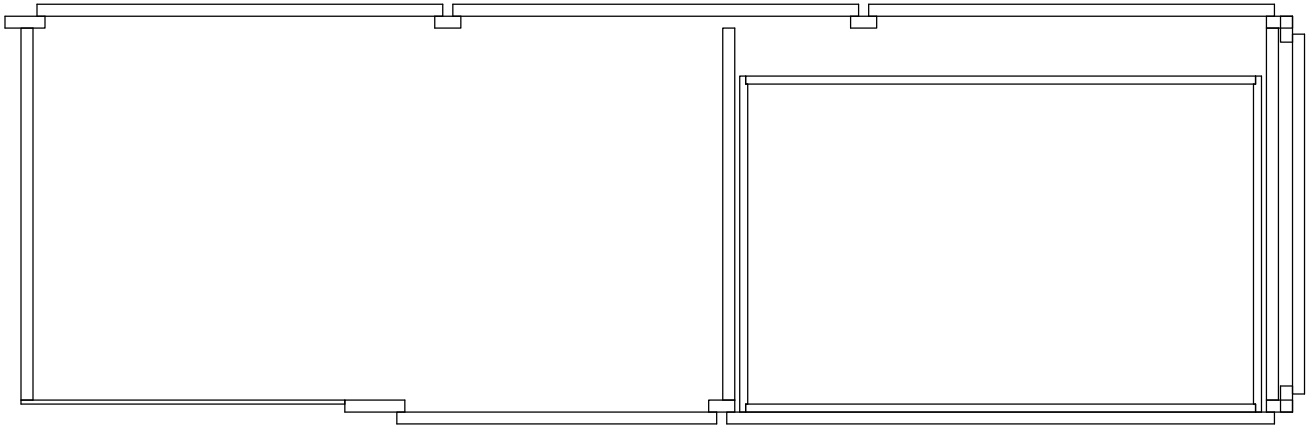
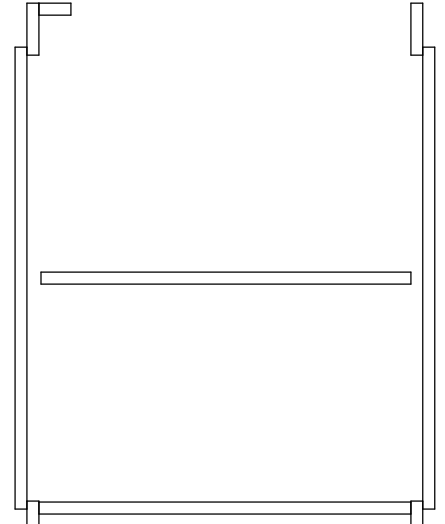
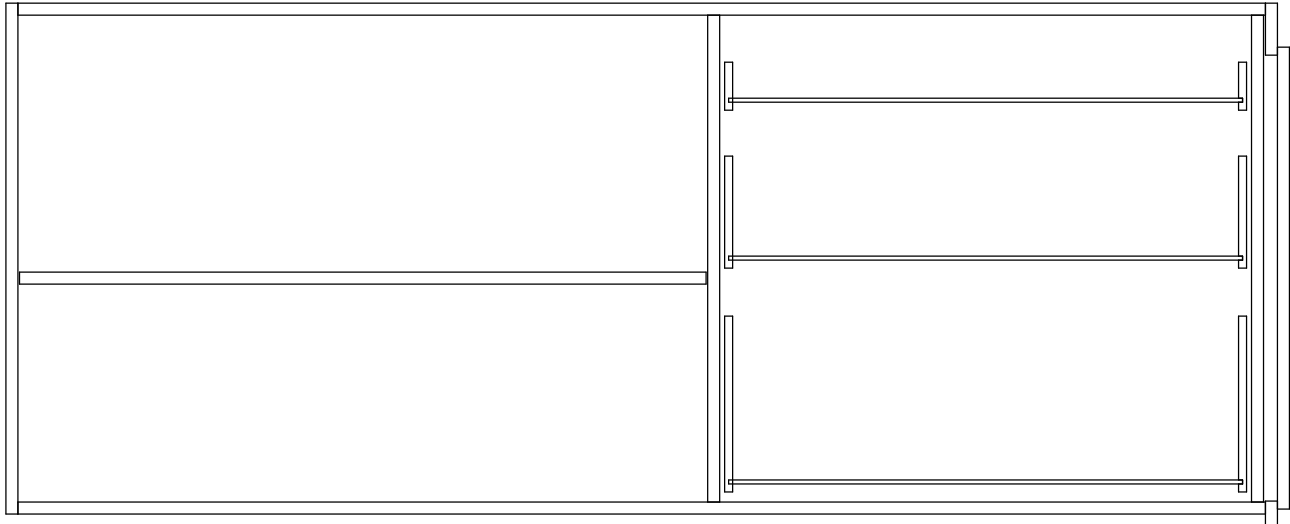




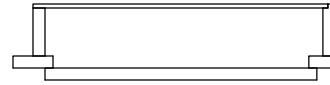
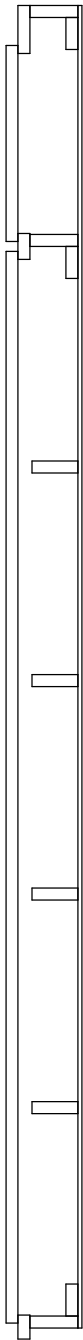
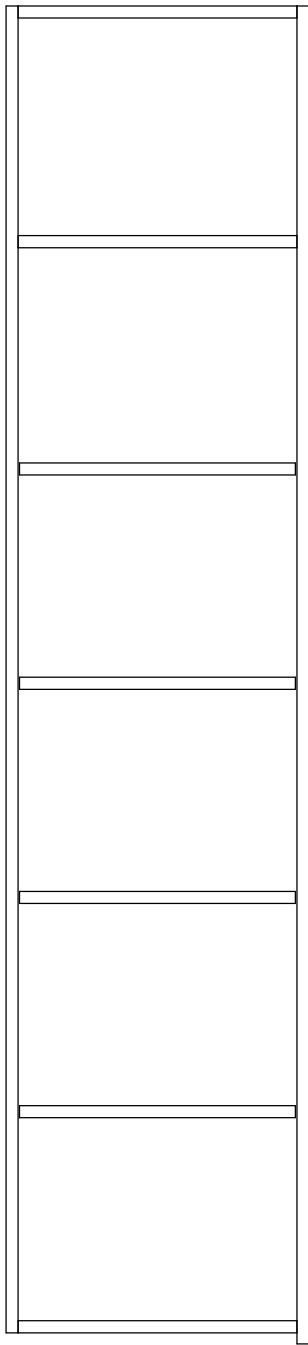
Cabinet 1-10



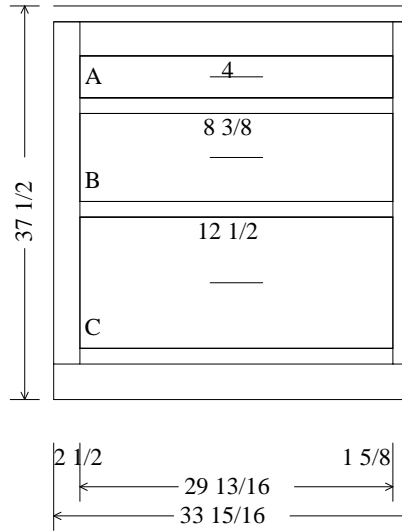
Cabinet 1-3



Cabinet 1-7



Cabinet 1-6



Base Cabinet **1-1**

INTERIOR: Melamine Grant 3/4"  
 TOP TYPE: 1 1/2" Thick Tops NS  
 DOOR STYLE: Liverpool  
 DRAWER STYLE: Solid Slab  
 DEPTH: 24  
**LEFT SCRIBE: 1 3/4**  
**RIGHT SCRIBE: 7/8**

EXTERIOR: Alder/Melamine 3/4"  
 THICKNESS: 1 1/2"

OPENING #	Drawer	Opening
A:	29 13/16 x 4	
B:	29 13/16 x 8 3/8	
C:	29 13/16 x 12 1/2	

**BODIES**

**FACE FRAMES**

(1) 2	x 29 13/16	Top Stretcher	(1) 3 1/4	x 29 13/16	Top Rail
(2) 23 1/4	x 31 15/16	Wall Sides	(1) 2 1/2	x 32 5/8	Left Stile
(1) 23 1/4	x 29 13/16	Bottom	(1) 1 5/8	x 32 5/8	Right Stile
(1) 30 7/16	x 31 1/2	Back Panel	(1) 1 1/2	x 29 13/16	Bottom Rail
(2) 4	x 29 13/16	Nailers	(2) 1 1/2	x 29 13/16	Rails

**DRAWERS**

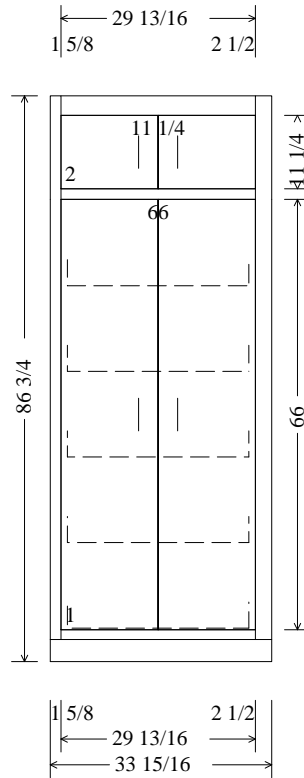
Solid Slab

PULL(S): Drawer Pull

SLIDES: Tandem 21"

Opening #	Finished Size (WxL)	Fronts (WxL)	Box (HxWxL)
A	1) 30 13/16 x 5	1) 30 13/16 x 5	1) 3 x 29 3/16 x 21
DRAWERS	Liverpool 5 pc drw	PULL(S): Drawer Pull	SLIDES: Tandem 21"

Opening #	Finished Size (WxL)	Fronts (WxL)	Box (HxWxL)
C	1) 30 13/16 x 13 1/2	1) 30 13/16 x 13 1/2	1) 11 x 29 3/16 x 21
B	1) 30 13/16 x 9 3/8	1) 30 13/16 x 9 3/8	1) 7 x 29 3/16 x 21



Pantry **1-2**

INTERIOR: Melamine Grant 3/4"  
 TOP TYPE: 1 1/2" Thick Tops NS  
 DOOR STYLE: Liverpool  
 DRAWER STYLE: Solid Slab  
 DEPTH: 26

EXTERIOR: Alder/Melamine 3/4"  
 THICKNESS: 0  
 OPENING # Door Opening  
 1: 29 13/16 x 66  
 2: 29 13/16 x 11 1/4

LEFT SCRIBE: 7/8  
 RIGHT SCRIBE: 1 3/4

BODIES

FACE FRAMES

(2) 25 1/4 x 82 11/16	Wall Sides	(1) 3 x 29 13/16	Top Rail
(1) 25 1/4 x 29 13/16	Bottom	(1) 2 1/2 x 83 3/8	Right Stile
(1) 25 1/4 x 29 13/16	Top	(1) 1 5/8 x 83 3/8	Left Stile
(1) 24 1/4 x 29 13/16	Fixed Shelf	(1) 1 5/8 x 29 13/16	Rail
(1) 30 7/16 x 81 13/16	Back Panel	(1) 1 1/2 x 29 13/16	Bottom Rail
(3) 4 x 29 13/16	Nailers		

DOORS Liverpool Split Panel PULL(S): Door Pull HINGE(S): Salice

Opening # Finished Size (WxH) Panels (WxH)

1 2) 15 7/16 x 67 Genoa 2) 15 7/16 x 67

PULL(S): Door Pull HINGE(S): Salice

Opening # Finished Size (WxH) Panels (WxH)

2 2) 15 7/16 x 12 1/4 2) 15 7/16 x 12 1/4



PULL-OUTS

PULL(S):

SLIDES: Tandem 21"

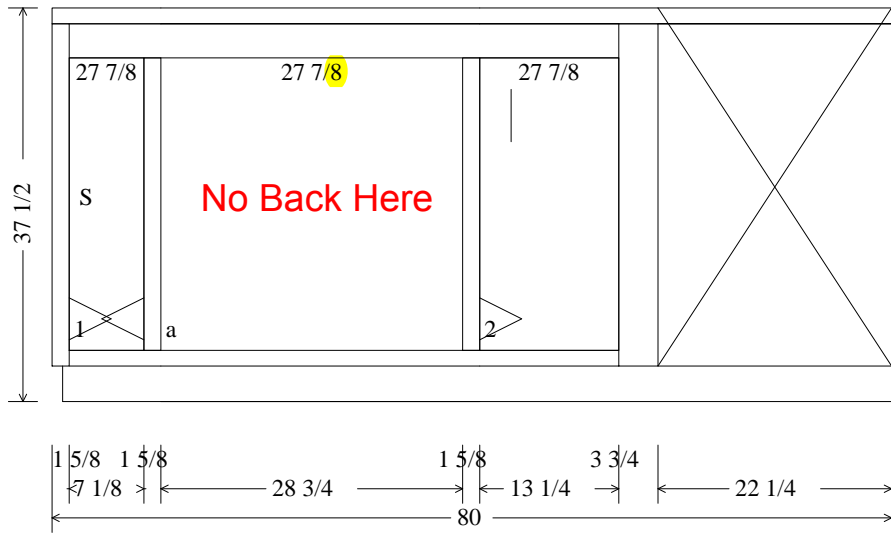
Opening #

Fronts (WxL)

Box (HxWxL)

1, 2, 3, 4,  
5

5) 3 x 26 5/16 x 21



Base Cabinet

1-3

BASE

INTERIOR:	Melamine Grant	3/4"	EXTERIOR:	Alder/Melamine	3/4"
TOP TYPE:	1 1/2" Thick Tops NS		THICKNESS:	1 1/2"	
DOOR STYLE:	Liverpool		OPENING #	Door Opening	OPENING #
DRAWER STYLE:	Solid Slab		1:	7 1/8 x 27 7/8	a:
DEPTH:	24		2:	13 1/4 x 27 7/8	28 3/4 x 27 7/8

BODIES

FACE FRAMES

(1) 2	x 78 1/2	Top Stretcher	(1) 3 3/4	x 32 5/8	Right Stile
(1) 23 1/4	x 78 1/2	Bottom	(1) 3 1/4	x 52 3/8	Top Rail
(1) 23 1/4	x 31 15/16	Return Side	(1) 1 5/8	x 32 5/8	Left Stile
(3) 22 1/4	x 30 7/16	Vert Partitions	(2) 1 5/8	x 27 7/8	Mullions
(1) 39 9/16	x 31 1/2	Back Panel	(1) 1 1/2	x 52 3/8	Bottom Rail
(1) 22 1/4	x 31 15/16	Blank Panel			
(1) 8 3/4	x 31 1/2	Back Panel			
(2) 4	x 78 1/2	Nailers			

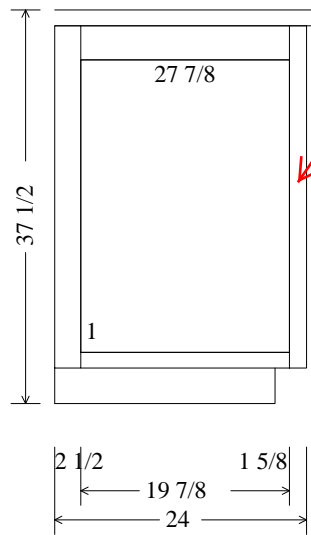
DOORS

Liverpool

PULL(S): Door Pull

HINGE(S): Salice

Opening #	Finished Size (WxH)	Panel s (WxH)
2	1) 14 1/4 x 28 7/8	1) 14 1/4 x 28 7/8
1	1) 8 1/8 x 28 7/8	1) 8 1/8 x 28 7/8



Typical.....  
On all section ends  
you will need to cut  
1-5/8" stile down to  
a 7/8" stile

Base Cabinet **1-3Left**

INTERIOR: Melamine Grant  
TOP TYPE: 1 1/2" Thick Tops NS  
DOOR STYLE: Liverpool  
DRAWER STYLE: Solid Slab

3/4"

EXTERIOR: Alder/Melamine  
THICKNESS: 1 1/2  
OPENING # Door Opening  
1: 19 7/8 x 27 7/8

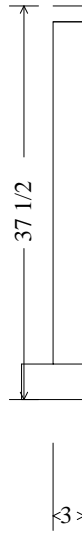
3/4"

FACE FRAMES

(1) 3 1/4	x 19 7/8	Top Rail
(1) 2 1/2	x 32 5/8	Left Stile
(1) 1 5/8	x 32 5/8	<b>Right Stile</b> Trim Down
(1) 1 1/2	x 19 7/8	Bottom Rail

DOORS Liverpool PULL(S): Door Pull HINGE(S): Salice

Opening #	Finished Size (WxH)	Panel s (WxH)
1	1) 20 7/8 x 28 7/8	1) 20 7/8 x 28 7/8



Base Filler **1-4**

INTERIOR: Melamine Grant  
TOP TYPE: 1 1/2" Thick Tops NS  
DOOR STYLE: Liverpool  
DRAWER STYLE: Solid Slab  
DEPTH: 24  
LEFT SCRIBE: 2 1/4  
RIGHT SCRIBE: 1/4

3/4"

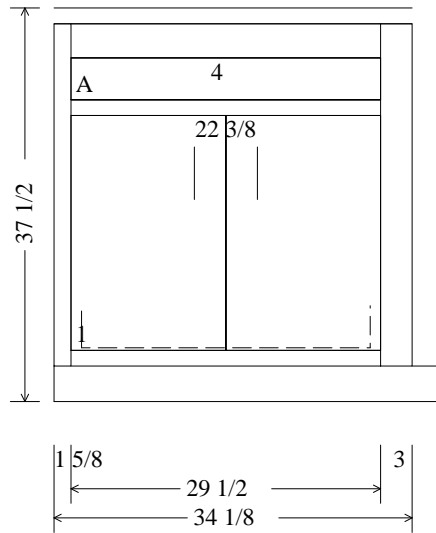
EXTERIOR: Alder/Melamine  
THICKNESS: 1 1/2

3/4"

FACE FRAMES

(1) 3 x 32 5/8 Filler Stile

**Sink Cabinet**



Base Cabinet **1-5**

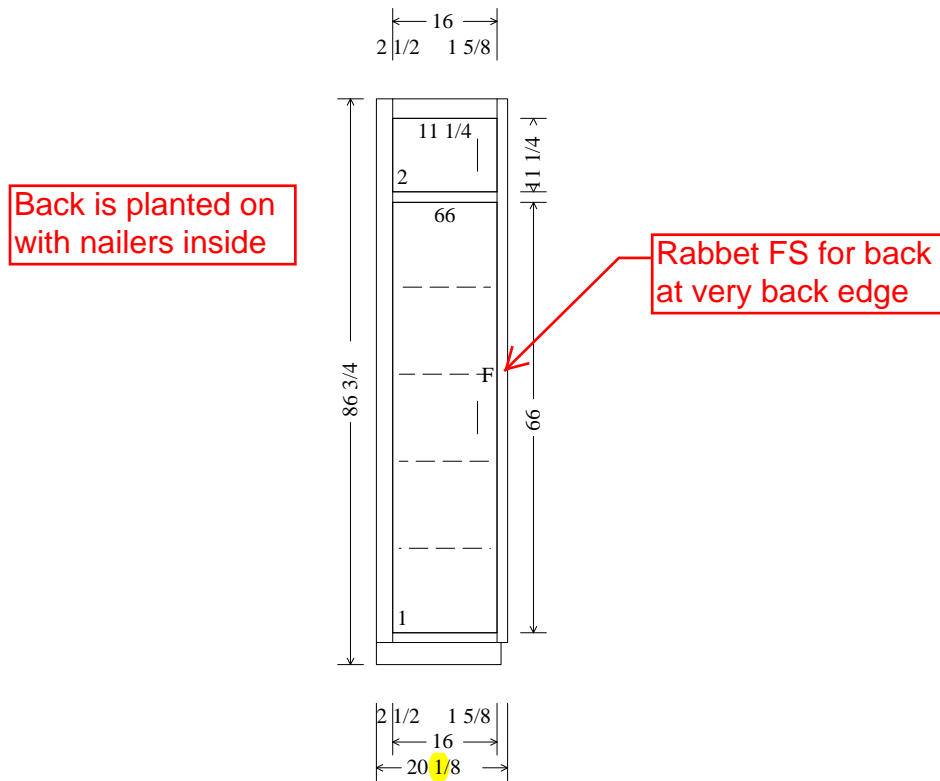
INTERIOR:	Melamine Grant	3/4"	EXTERIOR:	Alder/Melamine	3/4"
TOP TYPE:	1 1/2" Thick Tops NS		THICKNESS:	1 1/2"	
DOOR STYLE:	Liverpool		OPENING #	Door Opening	OPENING #
DRAWER STYLE:	Solid Slab		1:	29 1/2" x 22 3/8"	A: 29 1/2" x 4"
DEPTH:	24				
LEFT SCRIBE:	7/8				
RIGHT SCRIBE:	2 1/4				

BODIES			FACE FRAMES		
(1) 2	x 29 1/2	Top Stretcher	(1) 3 1/4	x 29 1/2	Top Rail
(2) 23 1/4	x 31 15/16	Wall Sides	(1) 3	x 32 5/8	Right Stile
(1) 23 1/4	x 29 1/2	Bottom	(1) 1 5/8	x 32 5/8	Left Stile
(1) 30 1/8	x 31 1/2	Back Panel	(1) 1 1/2	x 29 1/2	Bottom Rail
(2) 4	x 29 1/2	Nailers	(1) 1 1/2	x 29 1/2	Rail

DOORS	Liverpool	PULL(S):	HINGE(S):
Opening #	Finished Size (WxH)	Door Pull	Salice
1	2) 15 1/4 x 23 3/8		
		2) 15 1/4 x 23 3/8	

DRAWERS	Solid Slab	PULL(S):	SLIDES:
Opening #	Finished Size (WxL)	Drawer Pull	
A	1) 30 1/2 x 5		
		1) 30 1/2 x 5	

PULL-OUTS	PULL(S):	SLIDES:
Opening #	Fronts (WxL)	Tandem 21"
1	1) 3 x 26 x 21	



Pantry **1-6**

INTERIOR:	Melamine Grant	3/4"	EXTERIOR:	Alder/Melamine	3/4"
TOP TYPE:	1 1/2" Thick Tops NS		THICKNESS:	0	
DOOR STYLE:	Liverpool		OPENING #	Door Opening	
DRAWER STYLE:	Solid Slab		1:	16 x 66	
DEPTH:	4		2:	16 x 11 1/4	
<b>LEFT SCRIBE:</b>	<b>1 1/4</b>				

BODIES

FACE FRAMES

(1) 3	x 82 11/16	Wall Side	(1) 3	x 16	Top Rail
(1) 3	x 17 3/8	Fixed Shelf	(1) 2 1/2	x 83 3/8	Left Stile
(1) 3	x 17 3/8	Bottom	(1) 1 5/8	x 83 3/8	Right Stile
(1) 3	x 17 3/8	Top	(1) 1 5/8	x 16	Rail
(4) 2 7/8	x 17 3/16	Adjustable Shelves	(1) 1 1/2	x 16	Bottom Rail
(1) 18 7/16	x 82 11/16	Back Panel			
(3) 2	x 17 3/8	Nailers			
(1) 3 1/4	x 83 3/8	Finished Side			

DOORS Liverpool Split Panel PULL(S): Door Pull HINGE(S): Salice

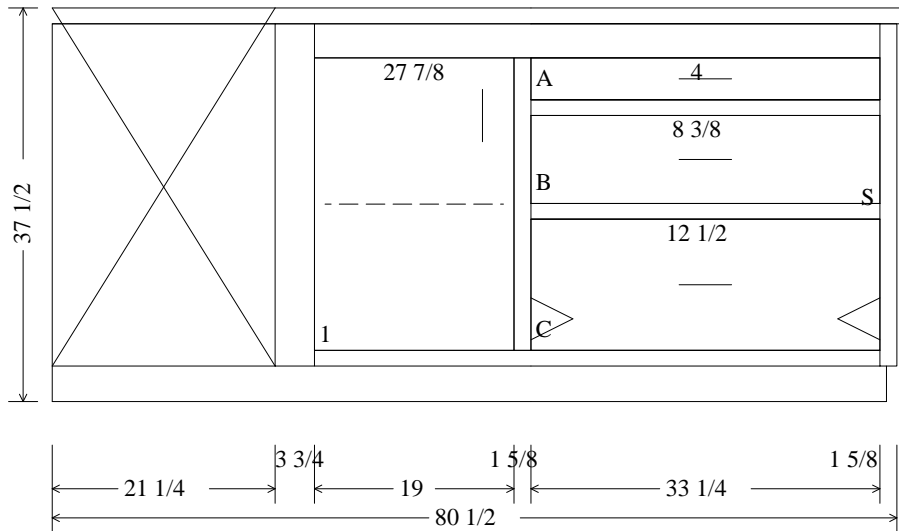
Opening # Finished Size (WxH) Panels (WxH)

1	1) 17	x 67	1) 17	x 67
DOORS		Genoa		

PULL(S): Door Pull HINGE(S): Salice

Opening # Finished Size (WxH) Panels (WxH)

2	1) 17	x 12 1/4	1) 17	x 12 1/4
---	-------	----------	-------	----------



Peninsula Base **1-7**

PEN BASE

INTERIOR: Melamine Grant 3/4"  
TOP TYPE: 1 1/2" Thick Tops NS  
DOOR STYLE: Liverpool  
DRAWER STYLE: Solid Slab  
**DEPTH: 24 3/4**

EXTERIOR: Alder/Melamine 3/4"  
THICKNESS: 1 1/2  
OPENING # Door Opening  
1: 19 x 27 7/8

OPENING # Drawer Opening  
A: 33 1/4 x 4  
B: 33 1/4 x 8 3/8  
C: 33 1/4 x 12 1/2

BODIES

FACE FRAMES

(1) 2 x 78	Top Stretcher	(1) 3 3/4 x 32 5/8	Left Stile
(1) 23 1/4 x 78	Bottom	(1) 3 1/4 x 53 7/8	Top Rail
(1) 23 1/4 x 31 15/16	Return Side	(1) 1 5/8 x 32 5/8	Right Stile
(2) 23 1/4 x 30 7/16	Vert Partitions	(1) 1 5/8 x 27 7/8	Mullion
(1) 23 1/8 x 42 15/16	Adjustable Shelf	(1) 1 1/2 x 53 7/8	Bottom Rail
(1) 20 1/4 x 31 15/16	Blank Panel	(2) 1 1/2 x 33 1/4	Rails

DOORS Liverpool PULL(S): Door Pull HINGE(S): Salice

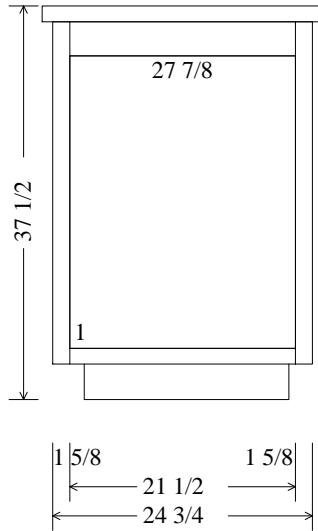
Opening #	Finished Size (WxH)	Panel s (WxH)
1	1) 20 x 28 7/8	1) 20 x 28 7/8

DRAWERS Solid Slab PULL(S): Drawer Pull SLIDES: Tandem 21"

Opening #	Finished Size (WxL)	Fronts (WxL)	Box (HxWxL)
A	1) 34 1/4 x 5	1) 34 1/4 x 5	1) 3 x 32 5/8 x 21

DRAWERS Liverpool 5 pc drw PULL(S): Drawer Pull SLIDES: Tandem 21"

Opening #	Finished Size (WxL)	Fronts (WxL)	Box (HxWxL)
C	1) 34 1/4 x 13 1/2	1) 34 1/4 x 13 1/2	1) 11 x 32 5/8 x 21
B	1) 34 1/4 x 9 3/8	1) 34 1/4 x 9 3/8	1) 7 x 32 5/8 x 21



Peninsula Base **1-7Right**

INTERIOR: Melamine Grant 3/4"  
TOP TYPE: 1 1/2" Thick Tops NS  
DOOR STYLE: Liverpool  
DRAWER STYLE: Solid Slab

EXTERIOR: Alder/Melamine 3/4"  
THICKNESS: 1 1/2"  
OPENING # Door Opening  
1: 21 1/2 x 27 7/8

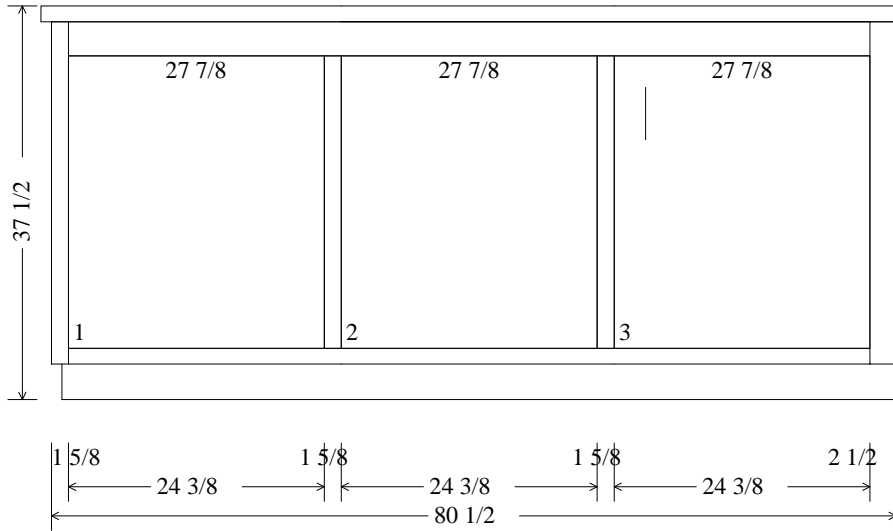
FACE FRAMES

- (1) 3 1/4 x 21 1/2 Top Rail
- (2) 1 5/8 x 32 5/8 **Stiles** Trim Down
- (1) 1 1/2 x 21 1/2 Bottom Rail

DOORS Liverpool PULL(S): Door Pull HINGE(S): Salice

Opening #	Finished Size (WxH)	Panel s (WxH)
1)	22 1/2 x 28 7/8	1) 22 1/2 x 28 7/8





Peninsula Base **1-7Back**

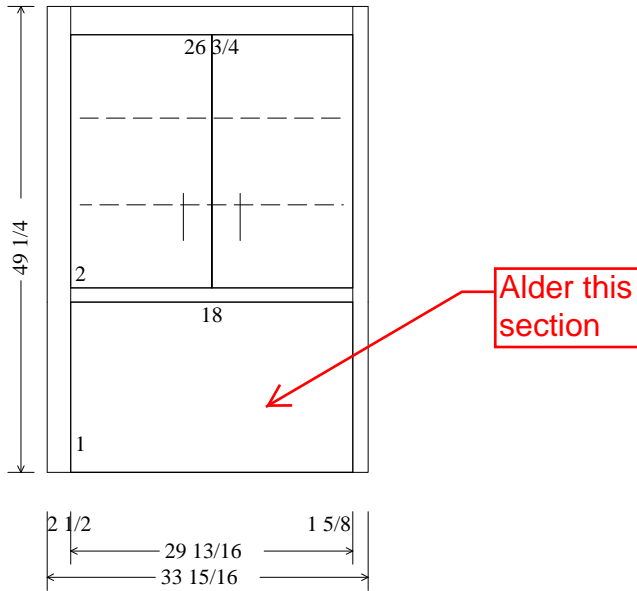
INTERIOR:	Melamine Grant	3/4"	EXTERIOR:	Alder/Melamine	3/4"
TOP TYPE:	1 1/2" Thick Tops NS		THICKNESS:	1 1/2"	
DOOR STYLE:	Liverpool		OPENING #	Door Opening	
DRAWER STYLE:	Solid Slab		1:	24 3/8 x 27 7/8	
			2:	24 3/8 x 27 7/8	
			3:	24 3/8 x 27 7/8	

FACE FRAMES

(1)	3 1/4	x	76 3/8	Top Rail
(1)	2 1/2	x	32 5/8	Right Stile
(1)	1 5/8	x	32 5/8	Left Stile
(2)	1 5/8	x	27 7/8	Mullions
(1)	1 1/2	x	76 3/8	Bottom Rail

DOORS Liverpool PULL(S): Door Pull HINGE(S): Salice

Opening #	Finished Size (WxH)	Panel s (WxH)
1,2	2) 25 3/8 x 28 7/8	2) 25 3/8 x 28 7/8
3	1) 25 3/8 x 28 7/8	1) 25 3/8 x 28 7/8



Upper Cabinet **1-8**

UPPER

INTERIOR: Melamine Grant 3/4"

EXTERIOR: Alder/Melamine 3/4"

DOOR STYLE: Genoa  
DRAWER STYLE: Solid Slab  
DEPTH: 18

OPENING # Door Opening  
1: 29 13/16 x 18  
2: 29 13/16 x 26 3/4

LEFT SCRIBE: 1  
RIGHT SCRIBE: 1/8

BODIES

FACE FRAMES

(2) 17 1/4 x 49 5/16	Wall Sides	(1) 3 x 29 13/16	Top Rail
(1) 17 1/4 x 31 5/16	Top	(1) 2 1/2 x 49 1/4	Left Stile
(1) 16 1/4 x 31 5/16	Fixed Shelf	(1) 1 5/8 x 49 1/4	Right Stile
(2) 16 1/8 x 31 1/8	Adjustable Shelves	(1) 1 1/2 x 29 13/16	Middle Rail
(1) 31 15/16 x 29 3/4	Back Panel		
(2) 4 x 31 5/16	Nailers		
(1) 31 15/16 x 19 1/16	Back Panel		
(2) 16 1/4 x 18 11/16	Side Fills		

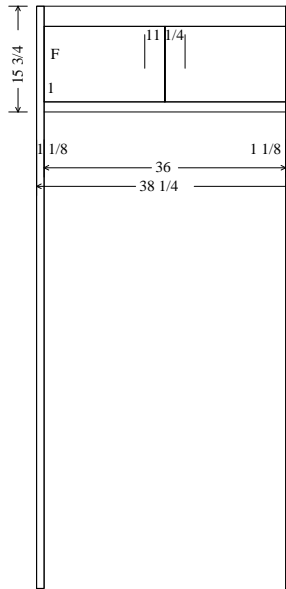
DOORS Liverpool PULL(S): Door Pull HINGE(S): Salice

Opening # Finished Size (WxH) Panels (WxH)

1 1) 30 13/16 x 18 1/2 Genoa 1) 30 13/16 x 18 1/2 PULL(S): Door Pull HINGE(S): Salice

Opening # Finished Size (WxH) Panels (WxH)

2 2) 15 7/16 x 27 3/4 2) 15 7/16 x 27 3/4



Upper Cabinet **1-9**

UPPER

INTERIOR: Melamine Grant 3/4"

EXTERIOR: Alder/Melamine 3/4"

DOOR STYLE: Genoa  
DRAWER STYLE: Solid Slab  
DEPTH: 26  
RIGHT SCRIBE: 1/4

OPENING # Door Opening  
1: 36 x 11 1/4

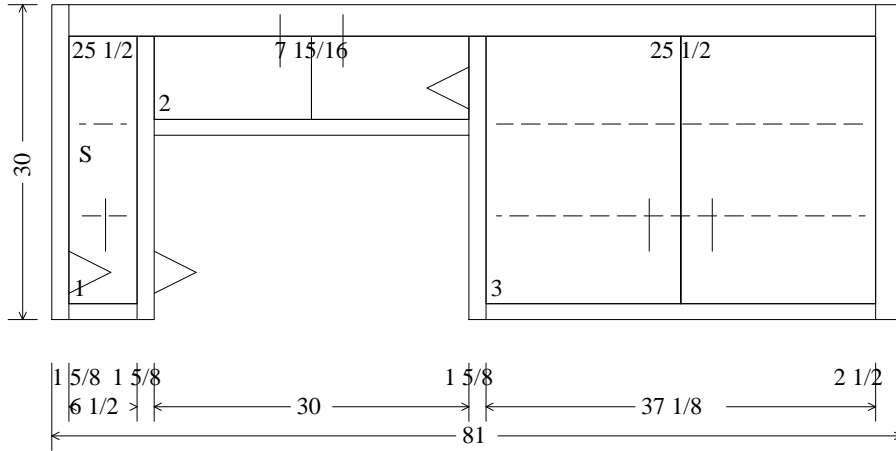
BODIES

FACE FRAMES

(1) 25 1/4 x 86 1/16	Wall Side	(1) 3 x 36	Top Rail
(1) 25 1/4 x 36 1/2	Bottom	(1) 1 1/2 x 36	Bottom Rail
(1) 25 1/4 x 36 1/2	Top	(2) 1 1/8 x 86 3/4	Stiles
(1) 37 1/8 x 14 3/16	Back Panel		
(2) 4 x 36 1/2	Nailers		
(1) 25 1/4 x 86 3/4	Finished Side		

DOORS Genoa PULL(S): Door Pull HINGE(S): Salice

Opening #	Finished Size (WxH)	Panel s (WxH)
1	2) 18 1/2 x 12 1/4	2) 18 1/2 x 12 1/4



Upper Cabinet **1-10**

UPPER

INTERIOR: Melamine Grant

3/4"

EXTERIOR: Alder/Melamine

3/4"

DOOR STYLE: Genoa  
DRAWER STYLE: Solid Slab  
DEPTH: 13  
RIGHT SCRIBE: **1 1/4**

OPENING #	Door Opening	
1:	6 1/2	x 25 1/2
2:	30	x 7 15/16
3:	37 1/8	x 25 1/2

BODIES

FACE FRAMES

(1) 12 1/4 x 78 1/4	Top	(1) 3 x 76 7/8	Top Rail
(1) 12 1/4 x 30	Bottom	(1) 2 1/2 x 30	Right Stile
(1) 12 1/4 x 29 5/16	Wall Side	(1) 1 5/8 x 30	Left Stile
(1) 11 1/4 x 27 13/16	Vert Partition	(2) 1 5/8 x 27	Mullions
(2) 11 1/8 x 38 5/16	Adjustable Shelves	(1) 1 1/2 x 37 1/8	Bottom Rail
(2) 11 1/8 x 7 3/16	Adjustable Shelves	(1) 1 1/2 x 30	Bottom Rail
(1) 39 1/8 x 28 7/16	Back Panel	(1) 1 1/2 x 6 1/2	Bottom Rail
(1) 30 5/8 x 10 7/8	Back Panel		
(1) 8 9/16 x 28 7/16	Back Panel		
(1) 4 x 78 1/4	Nailer		
(1) 4 x 38 1/2	Nailer		
(1) 4 x 30	Nailer		
(1) 4 x 8 1/4	Nailer		
(1) 12 1/4 x 38 1/2	Bottom		
(2) 12 1/4 x 29 1/4	Partitions		
(1) 12 1/4 x 8 1/4	Bottom		

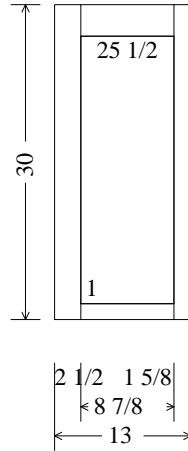
DOORS

Genoa

PULL(S): Door Pull

HINGE(S): Salice

Opening #	Finished Size (WxH)	Panel s (WxH)
3	2) 19 1/16 x 26 1/2	2) 19 1/16 x 26 1/2
1	1) 7 1/2 x 26 1/2	1) 7 1/2 x 26 1/2
2	2) 15 1/2 x 8 15/16	2) 15 1/2 x 8 15/16



Upper Cabinet **1-10Left**

INTERIOR: Melamine Grant 3/4" EXTERIOR: Alder/Melamine 3/4"  
 DOOR STYLE: Genoa OPENING # Door Opening  
 DRAWER STYLE: Solid Slab 1: 8 7/8 x 25 1/2

FACE FRAMES

- (1) 3 x 8 7/8 Top Rail
- (1) 2 1/2 x 30 Left Stile
- (1) 1 5/8 x 30 **Right Stile Trim Down**
- (1) 1 1/2 x 8 7/8 Bottom Rail

DOORS Genoa PULL(S): Door Pull HINGE(S): Salice

Opening #	Finished Size (WxH)	Panel s (WxH)
1	1) 9 7/8 x 26 1/2	1) 9 7/8 x 26 1/2

BODIES

Grant Cutting List

Number of Pieces	Width	Length	Description	Room #Cabinet (Quantity)
------------------	-------	--------	-------------	--------------------------

\*\*\*\*\* MATERIAL: 3/4 Pine \*\*\*\*\*

1	2	78 1/2	Top Stretcher	1[#3(1)]
1	2	78	Top Stretcher	1[#7(1)]
1	2	29 13/16	Top Stretcher	1[#1(1)]
1	2	29 1/2	Top Stretcher	1[#5(1)]

-----  
17.98 Ln. feet

\*\*\*\*\* MATERIAL: 3/4 White Mel 2S \*\*\*\*\*

1	25 1/4	86 1/16	Wal l Side	1[#9(1)]
2	25 1/4	82 11/16	Wal l Side	1[#2(2)]
1	25 1/4	36 1/2	Bottom	1[#9(1)]
1	25 1/4	36 1/2	Top	1[#9(1)]
1	25 1/4	29 13/16	Bottom	1[#2(1)]
1	25 1/4	29 13/16	Top	1[#2(1)]

-----  
32.01 Ln. feet = 4 Rip(s) 49x97 sheet

1	24 1/4	29 13/16	Fi xed Shel f	1[#2(1)]
---	--------	----------	---------------	----------

-----  
2.48 Ln. feet = 1 Rip(s) 49x97 sheet

1	23 1/4	78 1/2	Bottom	1[#3(1)]
1	23 1/4	78	Bottom	1[#7(1)]
2	23 1/4	31 15/16	Wal l Side	1[#1(2)]
1	23 1/4	31 15/16	Return Side	1[#3(1)]
2	23 1/4	31 15/16	Wal l Side	1[#5(2)]
1	23 1/4	31 15/16	Return Side	1[#7(1)]
2	23 1/4	30 7/16	Vert Parti tion	1[#7(2)]
1	23 1/4	29 13/16	Bottom	1[#1(1)]
1	23 1/4	29 1/2	Bottom	1[#5(1)]

-----  
39.03 Ln. feet = 5 Rip(s) 49x97 sheet

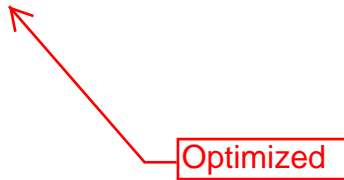
1	23 1/8	42 15/16 1L	Adj ustable Shel f	1[#7(1)]
---	--------	-------------	--------------------	----------

-----  
3.58 Ln. feet = 1 Rip(s) 49x97 sheet

3	22 1/4	30 7/16	Vert Parti tion	1[#3(3)]
---	--------	---------	-----------------	----------

-----  
7.61 Ln. feet = 1 Rip(s) 49x97 sheet

2	17 1/4	49 5/16	Wal l Si de	1[#8(2)]
---	--------	---------	-------------	----------



BODIES

Grant Cutting List

Number of Pieces    Width    Length    Description    Room #Cabinet (Quantity)

\*\*\*\*\* MATERIAL: 3/4 White Mel 2S \*\*\*\*\*

1    17 1/4    31 5/16    Top    1[#8(1)]

-----  
10.83 Ln. feet = 2 Rip(s) 49x97 sheet

2    16 1/8    31 1/8    1L    Adjustable Shelf    1[#8(2)]

-----  
5.19 Ln. feet = 1 Rip(s) 49x97 sheet

1    12 1/4    78 1/4    Top    1[#10(1)]

1    12 1/4    30    Bottom    1[#10(1)]

1    12 1/4    29 5/16    Wall Side    1[#10(1)]

-----  
11.46 Ln. feet = 2 Rip(s) 49x97 sheet

2    11 1/8    38 5/16    1L    Adjustable Shelf    1[#10(2)]

2    11 1/8    8 1/16    1L    Adjustable Shelf    1[#10(2)]

-----  
7.73 Ln. feet = 1 Rip(s) 49x97 sheet

1    3    82 11/16    Wall Side    1[#6(1)]

1    3    17 3/8    Fixed Shelf    1[#6(1)]

1    3    17 3/8    Bottom    1[#6(1)]

1    3    17 3/8    Top    1[#6(1)]

-----  
11.23 Ln. feet = 2 Rip(s) 49x97 sheet

4    2 7/8    17 3/16    1L    Adjustable Shelf    1[#6(4)]

-----  
5.73 Ln. feet = 1 Rip(s) 49x97 sheet

\*\*\*\*\* MATERIAL: 1/4 White Vinyl 1S \*\*\*\*\*

1    39 9/16    31 1/2    Back Panel    1[#3(1)]

-----  
2.62 Ln. feet = 1 Rip(s) 49x97 sheet

1    39 1/8    28 7/16    Back Panel    1[#10(1)]

-----  
2.37 Ln. feet = 1 Rip(s) 49x97 sheet

1    37 1/8    14 3/16    Back Panel    1[#9(1)]

-----  
1.18 Ln. feet = 1 Rip(s) 49x97 sheet

↑  
**Optimized**

**Added:  
1 Vertical Partition  
11-1/4 X 27\_13/16  
Cabinet 1-10  
  
Sent to optimizer**

↑  
**Optimized**

BODIES

Grant Cutting List

Job Number:

Number of Pieces	Width	Length	Description	Room #Cabinet (Quantity)
------------------	-------	--------	-------------	--------------------------

\*\*\*\*\* MATERIAL: 1/4 White Vinyl 1S \*\*\*\*\*

1	31 15/16	29 3/4	Back Panel	1[#8(1)]
---	----------	--------	------------	----------

-----  
2.48 Ln. feet = 1 Rip(s) 49x97 sheet

1	30 5/8	10 7/8	Back Panel	1[#10(1)]
---	--------	--------	------------	-----------

-----  
0.91 Ln. feet = 1 Rip(s) 49x97 sheet

1	30 7/16	81 13/16	Back Panel	1[#2(1)]
---	---------	----------	------------	----------

1	30 7/16	31 1/2	Back Panel	1[#1(1)]
---	---------	--------	------------	----------

-----  
9.44 Ln. feet = 2 Rip(s) 49x97 sheet

1	30 1/8	31 1/2	Back Panel	1[#5(1)]
---	--------	--------	------------	----------

-----  
2.62 Ln. feet = 1 Rip(s) 49x97 sheet

1	22 1/4	31 15/16	Blank Panel	1[#3(1)]
---	--------	----------	-------------	----------

-----  
2.66 Ln. feet = 1 Rip(s) 49x97 sheet

1	20 1/4	31 15/16	Blank Panel	1[#7(1)]
---	--------	----------	-------------	----------

-----  
2.66 Ln. feet = 1 Rip(s) 49x97 sheet

1	18 7/16	82 11/16	Back Panel	1[#6(1)]
---	---------	----------	------------	----------

-----  
6.89 Ln. feet = 1 Rip(s) 49x97 sheet

1	8 3/4	31 1/2	Back Panel	1[#3(1)]
---	-------	--------	------------	----------

-----  
2.62 Ln. feet = 1 Rip(s) 49x97 sheet

1	8 9/16	28 7/16	Back Panel	1[#10(1)]
---	--------	---------	------------	-----------

-----  
2.37 Ln. feet = 1 Rip(s) 49x97 sheet

\*\*\*\*\* MATERIAL: Scrap \*\*\*\*\*

2	4	78 1/2	Nai l er	1[#3(2)]
---	---	--------	----------	----------

1	4	78 1/4	Nai l er	1[#10(1)]
---	---	--------	----------	-----------

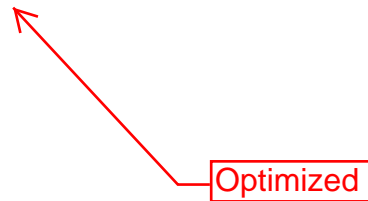
1	4	38 1/2	Nai l er	1[#10(1)]
---	---	--------	----------	-----------

2	4	36 1/2	Nai l er	1[#9(2)]
---	---	--------	----------	----------

2	4	31 5/16	Nai l er	1[#8(2)]
---	---	---------	----------	----------

1	4	30	Nai l er	1[#10(1)]
---	---	----	----------	-----------

5	4	29 13/16	Nai l er	1[#1(2) #2(3)]
---	---	----------	----------	----------------





BODIES

Grant Cutting List

Job Number:

Number of Pieces	Width	Length	Description	Room #Cabinet (Quantity)
------------------	-------	--------	-------------	--------------------------

\*\*\*\*\* MATERIAL: Scrap \*\*\*\*\*

2	4	29 1/2	Nailer	1[#5(2)]
1	4	8 1/4	Nailer	1[#10(1)]

54.64 Ln. feet = 7 Rip(s) 48x96 sheet

3	2	17 3/8	Nailer	1[#6(3)] <b>Can Pantry Nailer</b>
---	---	--------	--------	-----------------------------------

4.34 Ln. feet = 1 Rip(s) 48x96 sheet

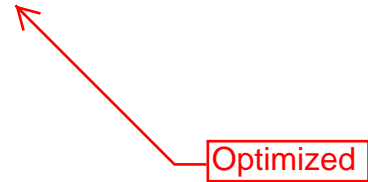
\*\*\*\*\* MATERIAL: 1/4 Alder Ply \*\*\*\*\*

1	31 15/16	19 1/16	Back Panel	1[#8(1)]
---	----------	---------	------------	----------

1.59 Ln. feet = 1 Rip(s) 48x96 sheet

2	16 1/4	18 11/16	Side Fills	1[#8(2)]
---	--------	----------	------------	----------

3.11 Ln. feet = 1 Rip(s) 48x96 sheet



**Optimized**

\*\*\*\*\* MATERIAL: 3/4 Alder/Melamine \*\*\*\*\*

1	25 1/4	86 3/4	Finished Side	1[#9(1)]
---	--------	--------	---------------	----------

7.23 Ln. feet = 1 Rip(s) 49x97 sheet

1	16 1/4	31 5/16	Fixed Shelf	1[#8(1)]
---	--------	---------	-------------	----------

2.61 Ln. feet = 1 Rip(s) 49x97 sheet

1	12 1/4	38 1/2	Bottom	1[#10(1)]
---	--------	--------	--------	-----------

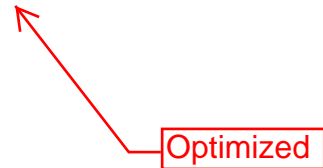
2	12 1/4	29 1/4	Partition	1[#10(2)]
---	--------	--------	-----------	-----------

1	12 1/4	8 1/4	Bottom	1[#10(1)]
---	--------	-------	--------	-----------

8.77 Ln. feet = 2 Rip(s) 49x97 sheet

1	3 1/4	83 3/8	Finished Side	1[#6(1)]
---	-------	--------	---------------	----------

6.95 Ln. feet = 1 Rip(s) 49x97 sheet



**Optimized**

## FACE FRAMES

## Grant Cutting List

Number of Pieces	Width	Length	Description	Room #Cabinet (Quantity)
---------------------	-------	--------	-------------	--------------------------

\*\*\*\*\* MATERIAL: 3/4 Solid Alder \*\*\*\*\*

2	3 3/4	32 5/8	Stile	1[#3(1) #7(1)]
---	-------	--------	-------	----------------

-----  
5.44 Ln. feet

1	3 1/4	76 3/8	Top Rail	1[#7B(1)]
1	3 1/4	53 7/8	Top Rail	1[#7(1)]
1	3 1/4	52 3/8	Top Rail	1[#3(1)]
1	3 1/4	29 13/16	Top Rail	1[#1(1)]
1	3 1/4	29 1/2	Top Rail	1[#5(1)]
1	3 1/4	21 1/2	Top Rail	1[#7R(1)]
1	3 1/4	19 7/8	Top Rail	1[#3L(1)]

-----  
23.61 Ln. feet

1	3	76 7/8	Top Rail	1[#10(1)]
1	3	36	Top Rail	1[#9(1)]
1	3	32 5/8	Stile	1[#5(1)]
1	3	32 5/8	Filler Stile	1[#4(1)]
2	3	29 13/16	Top Rail	1[#2(1) #8(1)]
1	3	16	Top Rail	1[#6(1)]
1	3	8 7/8	Top Rail	1[#10L(1)]

-----  
21.89 Ln. feet

2	2 1/2	83 3/8	Stile	1[#2(1) #6(1)]
1	2 1/2	49 1/4	Stile	1[#8(1)]
3	2 1/2	32 5/8	Stile	1[#1(1) #3L(1) #7B(1)]
2	2 1/2	30	Stile	1[#10(1) #10L(1)]

-----  
31.16 Ln. feet

2	1 5/8	83 3/8	Stile	1[#2(1) #6(1)]
1	1 5/8	49 1/4	Stile	1[#8(1)]
8	1 5/8	32 5/8	Stile	1[#1(1) #3(1) #3L(1) #5(1) #7(1) #7R(2) #7B(1)]
2	1 5/8	30	Stile	1[#10(1) #10L(1)]
1	1 5/8	29 13/16	Rail	1[#2(1)]
5	1 5/8	27 7/8	Mullion	1[#3(2) #7(1) #7B(2)]
2	1 5/8	27	Mullion	1[#10(2)]
1	1 5/8	16	Rail	1[#6(1)]

-----  
64.68 Ln. feet

1	1 1/2	76 3/8	Bottom Rail	1[#7B(1)]
1	1 1/2	53 7/8	Bottom Rail	1[#7(1)]
1	1 1/2	52 3/8	Bottom Rail	1[#3(1)]
1	1 1/2	37 1/8	Bottom Rail	1[#10(1)]
1	1 1/2	36	Bottom Rail	1[#9(1)]

**FACE FRAMES**

Grant Cutting List

Number of Pieces	Width	Length	Description	Room #Cabinet (Quantity)
***** MATERIAL: 3/4 Solid Alder *****				
2	1 1/2	33 1/4	Rail	1[#7(2)]
1	1 1/2	30	Bottom Rail	1[#10(1)]
2	1 1/2	29 13/16	Bottom Rail	1[#1(1) #2(1)]
2	1 1/2	29 13/16	Rail	1[#1(2)]
1	1 1/2	29 13/16	Middle Rail	1[#8(1)]
1	1 1/2	29 1/2	Bottom Rail	1[#5(1)]
1	1 1/2	29 1/2	Rail	1[#5(1)]
1	1 1/2	21 1/2	Bottom Rail	1[#7R(1)]
1	1 1/2	19 7/8	Bottom Rail	1[#3L(1)]
1	1 1/2	16	Bottom Rail	1[#6(1)]
1	1 1/2	8 7/8	Bottom Rail	1[#10L(1)]
1	1 1/2	6 1/2	Bottom Rail	1[#10(1)]
-----				
52.76 Ln. feet				
2	1 1/8	86 3/4	Stile	1[#9(2)]
-----				
14.46 Ln. feet				

## Grant Cutting List

## SUBCONTRACT DOORS

Style: **Liverpool** Pull Type: Door Pull  
 Panel Material: Alder Liverpool Hinge Type: Salice

Finished Size (WxH)	Panel s (WxH)	Room/Cabinet-Opening	Hinge
2) 25 3/8 x 28 7/8	2) 25 3/8 x 28 7/8	1[#7B(1, 2)]	None
1) 25 3/8 x 28 7/8	1) 25 3/8 x 28 7/8	1[#7B(3)]	Right
1) 22 1/2 x 28 7/8	1) 22 1/2 x 28 7/8	1[#7R(1)]	None
1) 20 7/8 x 28 7/8	1) 20 7/8 x 28 7/8	1[#3L(1)]	None
1) 20 x 28 7/8	1) 20 x 28 7/8	1[#7(1)]	Left
1) 14 1/4 x 28 7/8	1) 14 1/4 x 28 7/8	1[#3(2)]	Right
1) 8 1/8 x 28 7/8	1) 8 1/8 x 28 7/8	1[#3(1)]	None
2) 15 1/4 x 23 3/8	2) 15 1/4 x 23 3/8	1[#5(1)]	Pair
1) 30 13/16 x 18 1/2	1) 30 13/16 x 18 1/2	1[#8(1)]	None

## SUBCONTRACT DOORS

Style: **Liverpool Split Panel** Pull Type: Door Pull  
 Panel Material: Alder Liverpool Hinge Type: Salice

Finished Size (WxH)	Panel s (WxH)	Room/Cabinet-Opening	Hinge
1) 17 x 67	1) 17 x 67	1[#6(1)]	Left
2) 15 7/16 x 67	2) 15 7/16 x 67	1[#2(1)]	Pair

## Grant Cutting List

## SUBCONTRACT DOORS

Style: Genoa  
 Panel Material: Alder Genoa  
 Pull Type: Door Pull  
 Hinge Type: Salice

Finished Size (WxH)	Panel s (WxH)	Room/Cabinet-Opening	Hinge
2) 15 7/16 x 27 3/4	2) 15 7/16 x 27 3/4	1[#8(2)]	Pair
2) 19 1/16 x 26 1/2	2) 19 1/16 x 26 1/2	1[#10(3)]	Pair
1) 9 7/8 x 26 1/2	1) 9 7/8 x 26 1/2	1[#10L(1)]	None
1) 7 1/2 x 26 1/2	1) 7 1/2 x 26 1/2	1[#10(1)]	Left
2) 18 1/2 x 12 1/4	2) 18 1/2 x 12 1/4	1[#9(1)]	Pair
1) 17 x 12 1/4	1) 17 x 12 1/4	1[#6(2)]	Left
2) 15 7/16 x 12 1/4	2) 15 7/16 x 12 1/4	1[#2(2)]	Pair
2) 15 1/2 x 8 15/16	2) 15 1/2 x 8 15/16	1[#10(2)]	Pair

## Grant Cutting List

**DRAWERS**

Drawer Style: **Solid Slab** Pull Type: Drawer Pull  
 Front: Alder Drw Front

Fronts (WxL)	Ends (WxL)	Sides (WxL)	Bottoms (WxL)	Room/Cabinet-Drawer
1) 30 1/2 x 5				1[#5(A)]

**DRAWERS**

Drawer Style: **Solid Slab** Pull Type: Drawer Pull  
 Front: Alder Drw Front Slide Type: **Tandem 21"**

Fronts (WxL)	Box (HxWxL)	Room/Cabinet-Drawer
1) 34 1/4 x 5	1) 3 x 32 5/8 x 21	1[#7(A)]
1) 30 13/16 x 5	1) 3 x 29 3/16 x 21	1[#1(A)]

**DRAWERS**

Drawer Style: **Liverpool 5 pc drw** Pull Type: Drawer Pull  
 Front: Alder 5 Pc Drw Slide Type: **Tandem 21"**

Fronts (WxL)	Box (HxWxL)	Room/Cabinet-Drawer
1) 34 1/4 x 13 1/2	1) 11 x 32 5/8 x 21	1[#7(C)]
1) 34 1/4 x 9 3/8	1) 7 x 32 5/8 x 21	1[#7(B)]
1) 30 13/16 x 13 1/2	1) 11 x 29 3/16 x 21	1[#1(C)]
1) 30 13/16 x 9 3/8	1) 7 x 29 3/16 x 21	1[#1(B)]

Grant Cutting List

**PULL-OUTS**

-----  
Front: 1/2 Mel Drw Parts S0 Slide Type: Tandem 21"  
-----

Fronts (WxL)	Box (HxWxL)				
	5) 3	x 26 5/16	x 21	<b>Please verify these sizes</b>	1[#2(1, 2, 3, 4, 5)]
	1) 3	x 26	x 21		1[#5(1)]

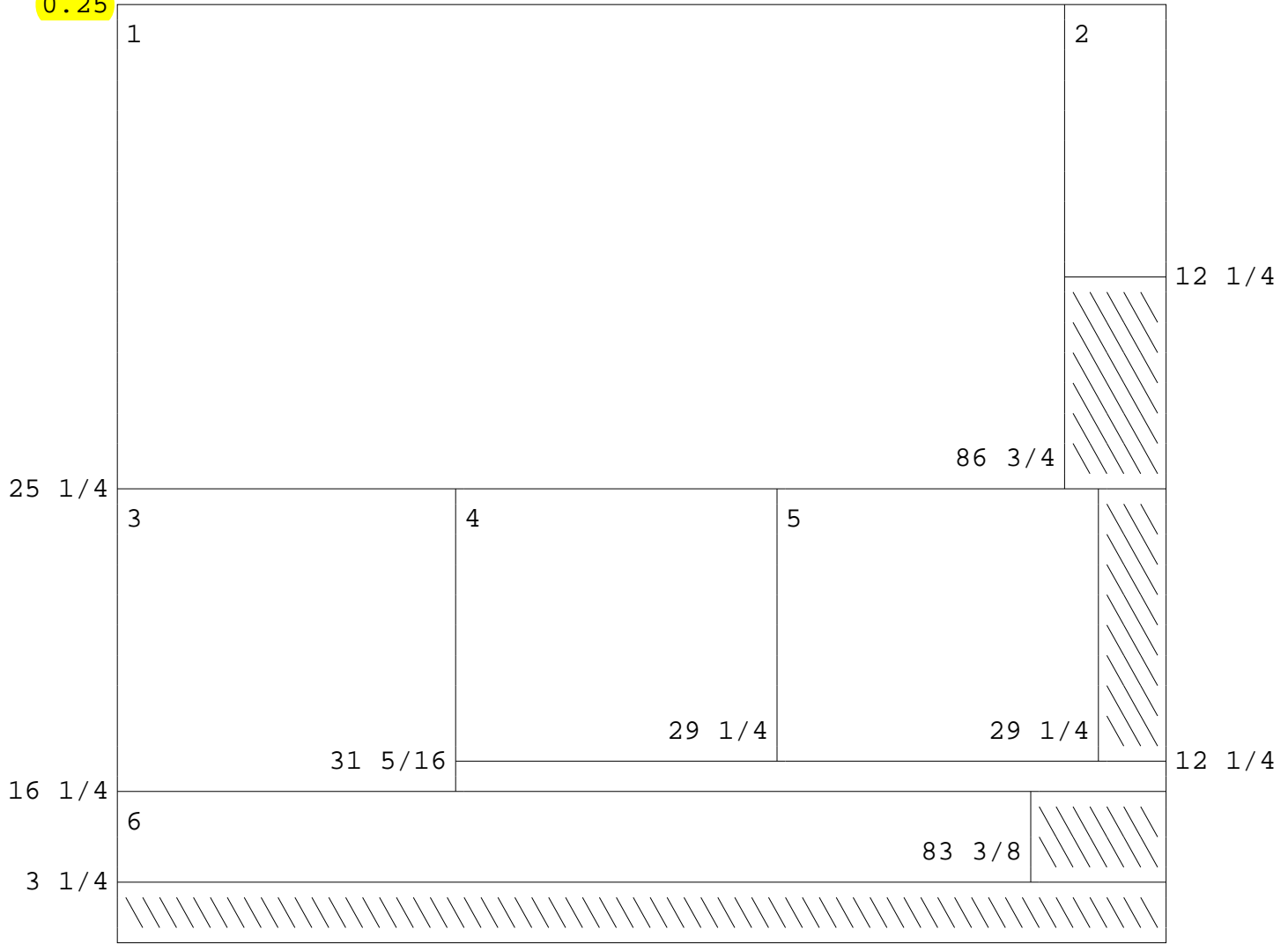
## Grant Cutting List

## JOB TOTALS

3/4 Pine	3.90	Sq. feet	2.50	9.75	
3/4 Particleboard	9.37	Sq. feet	0.50	4.68	0.28 Sheets
3/4 White Mel 2S	278.94	Sq. feet	0.85	237.10	8.45 Sheets 8
1/4 White Vinyl 1S	131.09	Sq. feet	0.65	85.21	3.97 Sheets 4
Scrap	22.73	Sq. feet	1.00	22.73	0.71 Sheets
Tape	22.22	Ln. feet	0.25	5.55	
Alder Liverpool	63.61	Sq. feet	10.00	636.10	
3/4 Solid Alder	36.76	Sq. feet	4.00	147.04	
Alder Drw Front	3.32	Sq. feet	7.20	23.90	
1/2 Mel Drw Parts S0	41.47	Sq. feet	0.00	0.00	1.26 Sheets
1/4 Drw Bottoms S0	47.98	Sq. feet	0.00	0.00	1.45 Sheets
1/4 Alder Ply	13.51	Sq. feet	1.00	13.51	0.42 Sheets 1
3/4 Alder Ply	11.47	Sq. feet	1.50	17.21	0.36 Sheets
Alder 5 Pc Drw	10.34	Sq. feet	10.30	106.50	
Alder Genoa	25.29	Sq. feet	12.26	310.06	
3/4 Alder/Mel amine	31.83	Sq. feet	0.00	0.00	0.96 Sheets 2
Salice	21.5	Pair	10.00	215.00	
Drawer Pull	6	Each	4.00	24.00	
Door Pull	20	Each	4.00	80.00	
Tandem 21"	12	Pair	30.00	360.00	
				=====	
				2298.34	



Trims: 0.25  
0.25

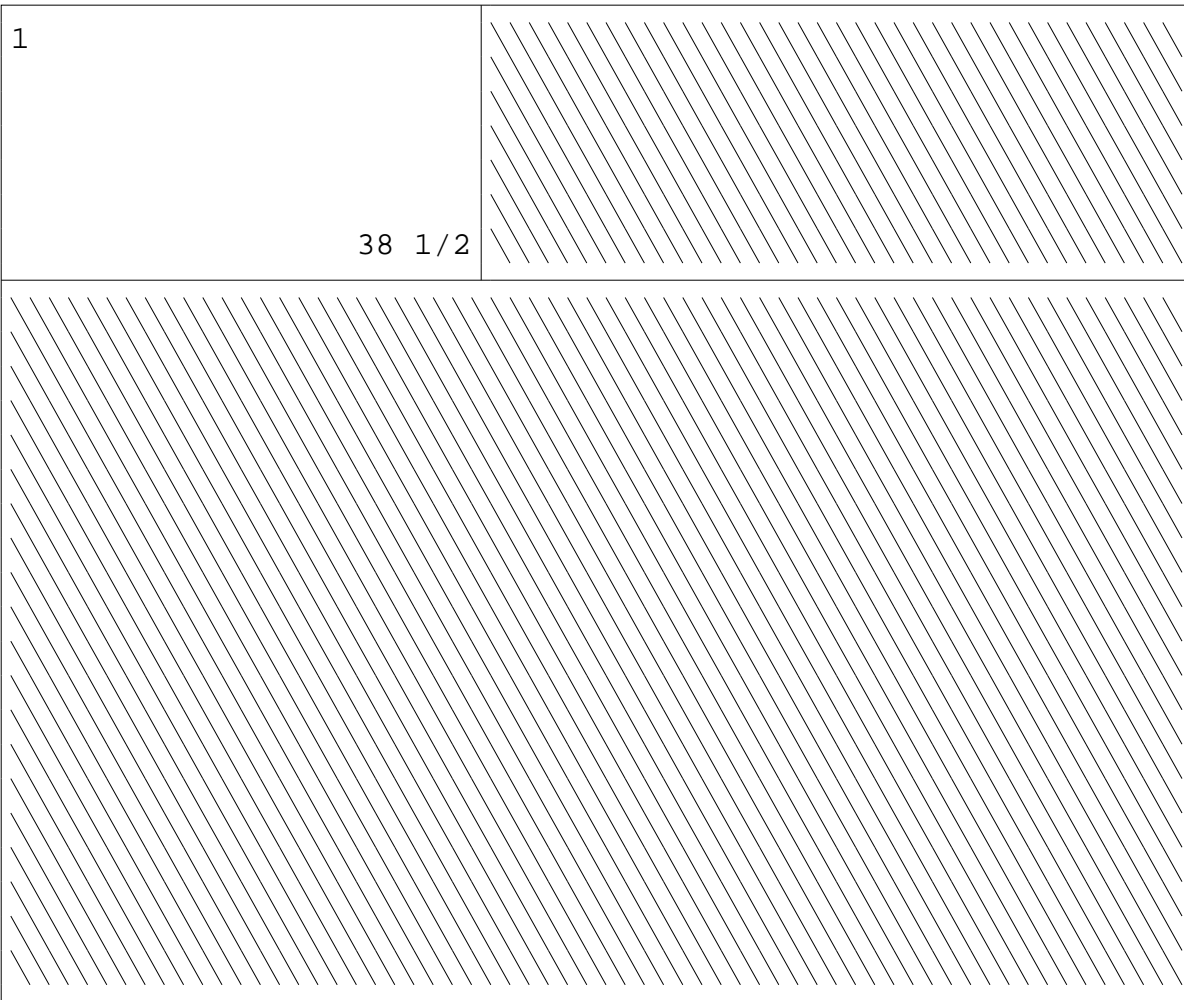


<<= Grain Direction =>>

#:	Width	x Length	Description	Room-Cabinet	Job Name
1:	25 1/4	x 86 3/4	Finished Side	1-9	GRANT
2:	12 1/4	x 8 1/4	Bottom	1-10	GRANT
3:	16 1/4	x 31 5/16	Fixed Shelf	1-8	GRANT
4:	12 1/4	x 29 1/4	Partition	1-10	GRANT
5:	12 1/4	x 29 1/4	Partition	1-10	GRANT
6:	3 1/4	x 83 3/8	Finished Side	1-6	GRANT

Trims: 0.25

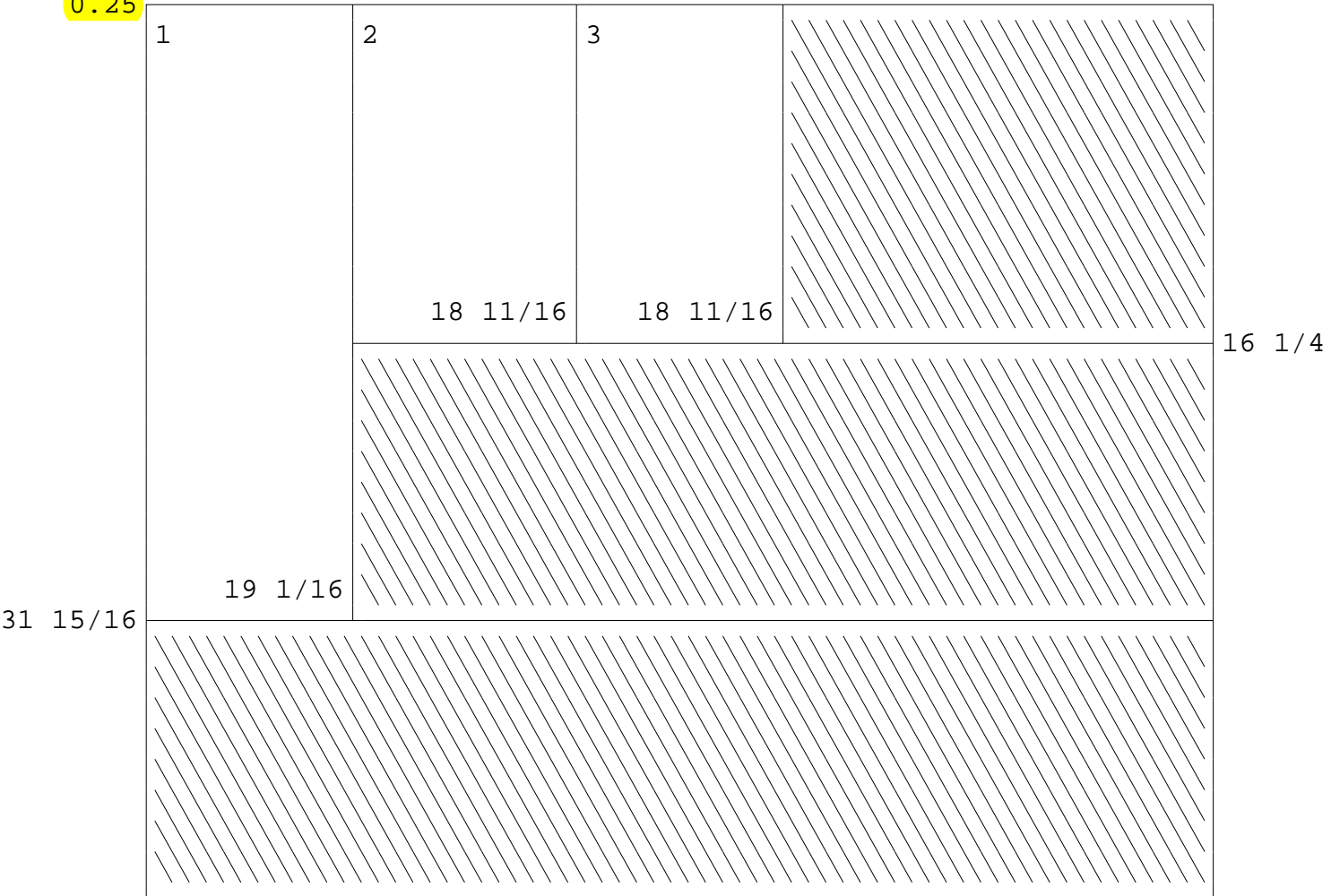
0.25



<<= Grain Direction =>>

#:	Width	x	Length	Description	Room-Cabinet	Job Name
1:	12 1/4	x	38 1/2	Bottom	1-10	GRANT

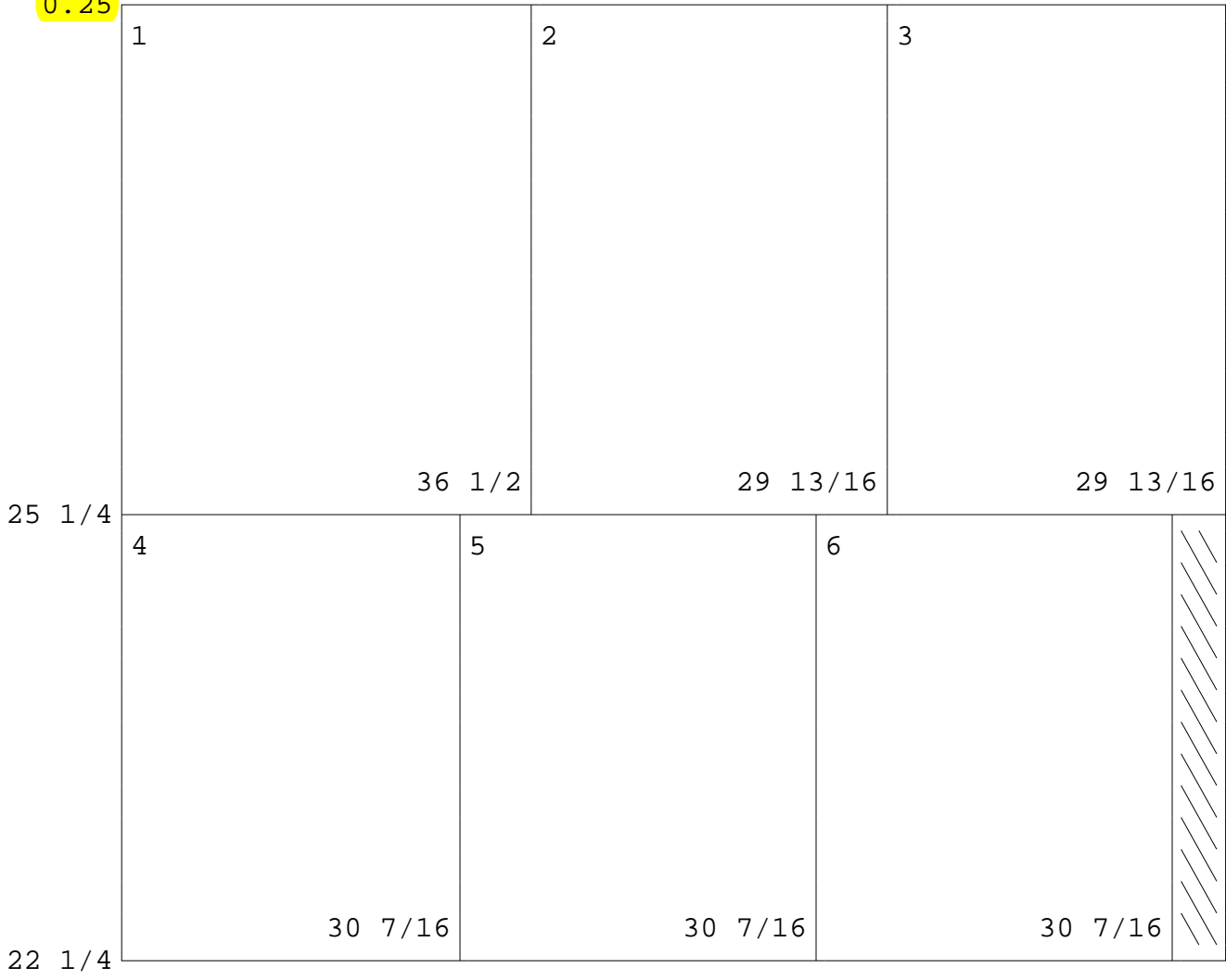
Trims: 0.25  
0.25



<<= Grain Direction =>>

#:	Width	x	Length	Description	Room-Cabinet	Job Name
1:	31 15/16	x	19 1/16	Back Panel	1-8	GRANT
2:	16 1/4	x	18 11/16	Side Fills	1-8	GRANT
3:	16 1/4	x	18 11/16	Side Fills	1-8	GRANT

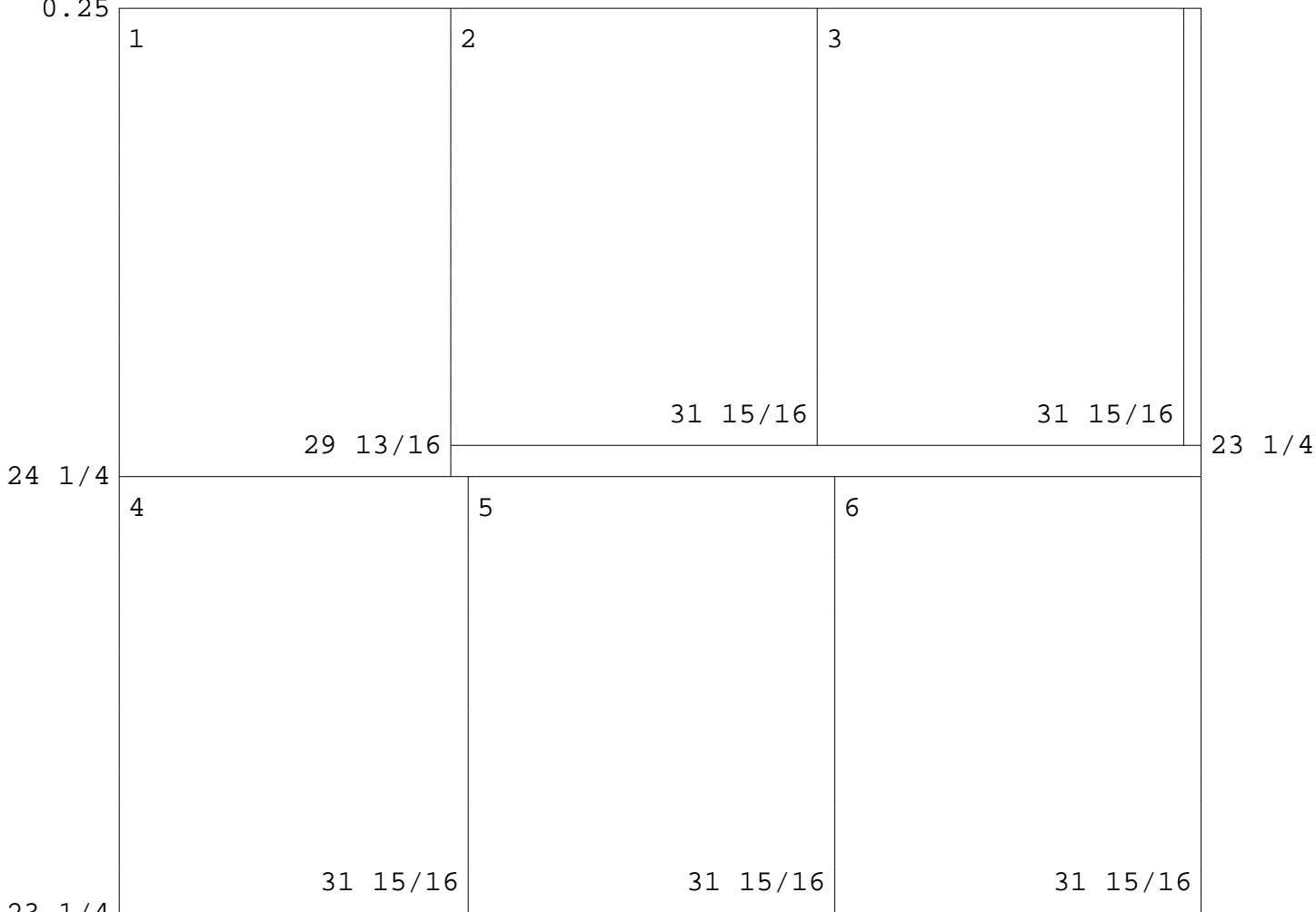
Trims: 0.25  
0.25



#:	Width	x	Length	Description	Room-Cabinet	Job Name
1:	25 1/4	x	36 1/2	Bottom	1-9	GRANT
2:	25 1/4	x	29 13/16	Top	1-2	GRANT
3:	25 1/4	x	29 13/16	Bottom	1-2	GRANT
4:	22 1/4	x	30 7/16	Vert Partition	1-3	GRANT
5:	22 1/4	x	30 7/16	Vert Partition	1-3	GRANT
6:	22 1/4	x	30 7/16	Vert Partition	1-3	GRANT

Trims: 0.25

0.25

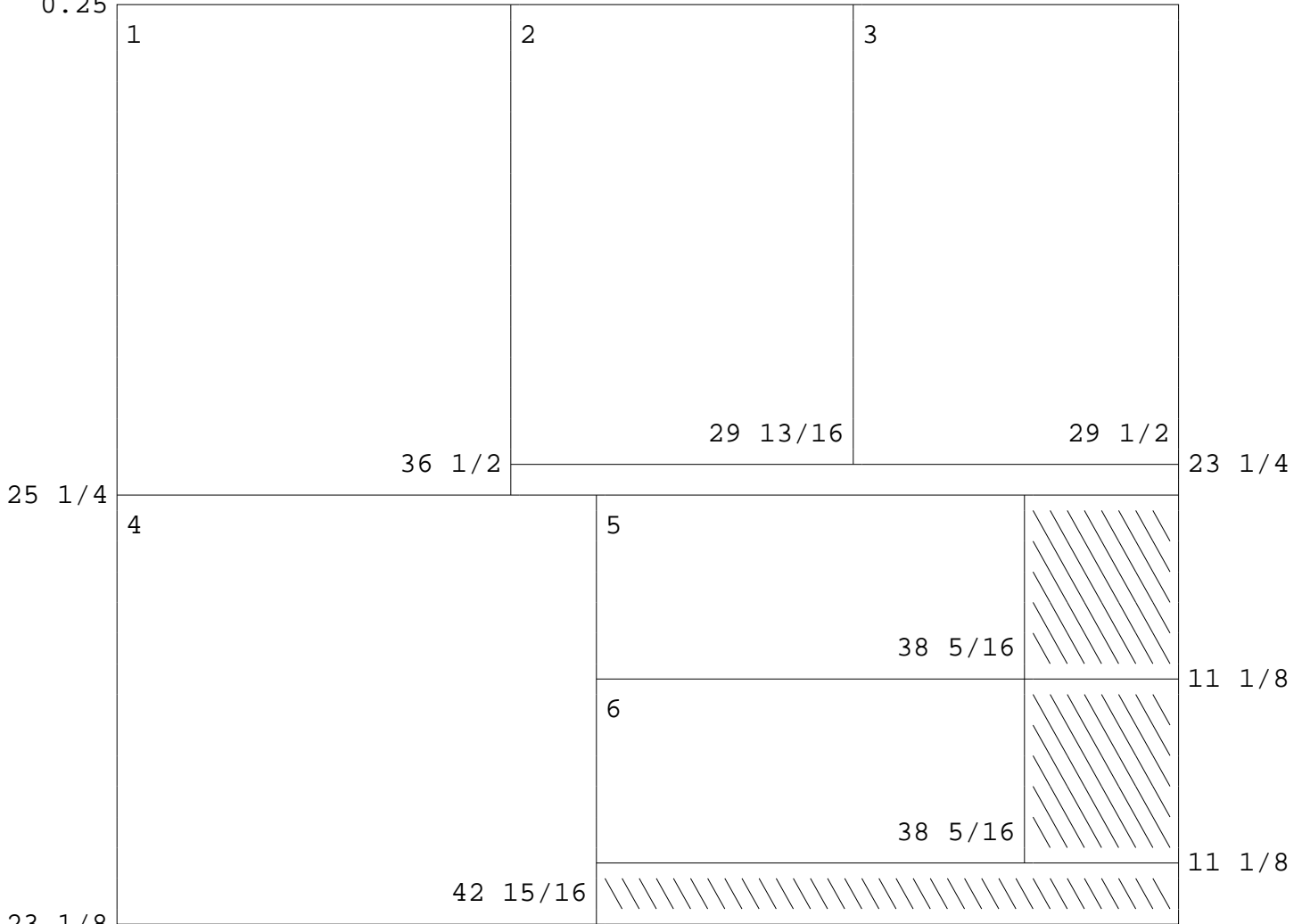


<=< Grain Direction =>>

#:	Width	x	Length	Description	Room-Cabinet	Job Name
1:	24 1/4	x	29 13/16	Fixed Shelf	1-2	GRANT
2:	23 1/4	x	31 15/16	Return Side	1-7	GRANT
3:	23 1/4	x	31 15/16	Wall Side	1-5	GRANT
4:	23 1/4	x	31 15/16	Wall Side	1-5	GRANT
5:	23 1/4	x	31 15/16	Return Side	1-3	GRANT
6:	23 1/4	x	31 15/16	Wall Side	1-1	GRANT

Trims: 0.25

0.25



<<= Grain Direction =>>

#:	Width	x	Length	Description	Room-Cabinet	Job Name
1:	25 1/4	x	36 1/2	Top	1-9	GRANT
2:	23 1/4	x	29 13/16	Bottom	1-1	GRANT
3:	23 1/4	x	29 1/2	Bottom	1-5	GRANT
4:	23 1/8	x	42 15/16	Adjustable Shelf	1-7	GRANT
5:	11 1/8	x	38 5/16	Adjustable Shelf	1-10	GRANT
6:	11 1/8	x	38 5/16	Adjustable Shelf	1-10	GRANT

Trims: 0.25

0.25



1

2 17 3/8

3

3 17 3/8

3

4 17 3/8

3

5 17 3/16

2 7/8

6 17 3/16

2 7/8

7 17 3/16

2 7/8

8 17 3/16

2 7/8

78 1/2

23 1/4

9

78

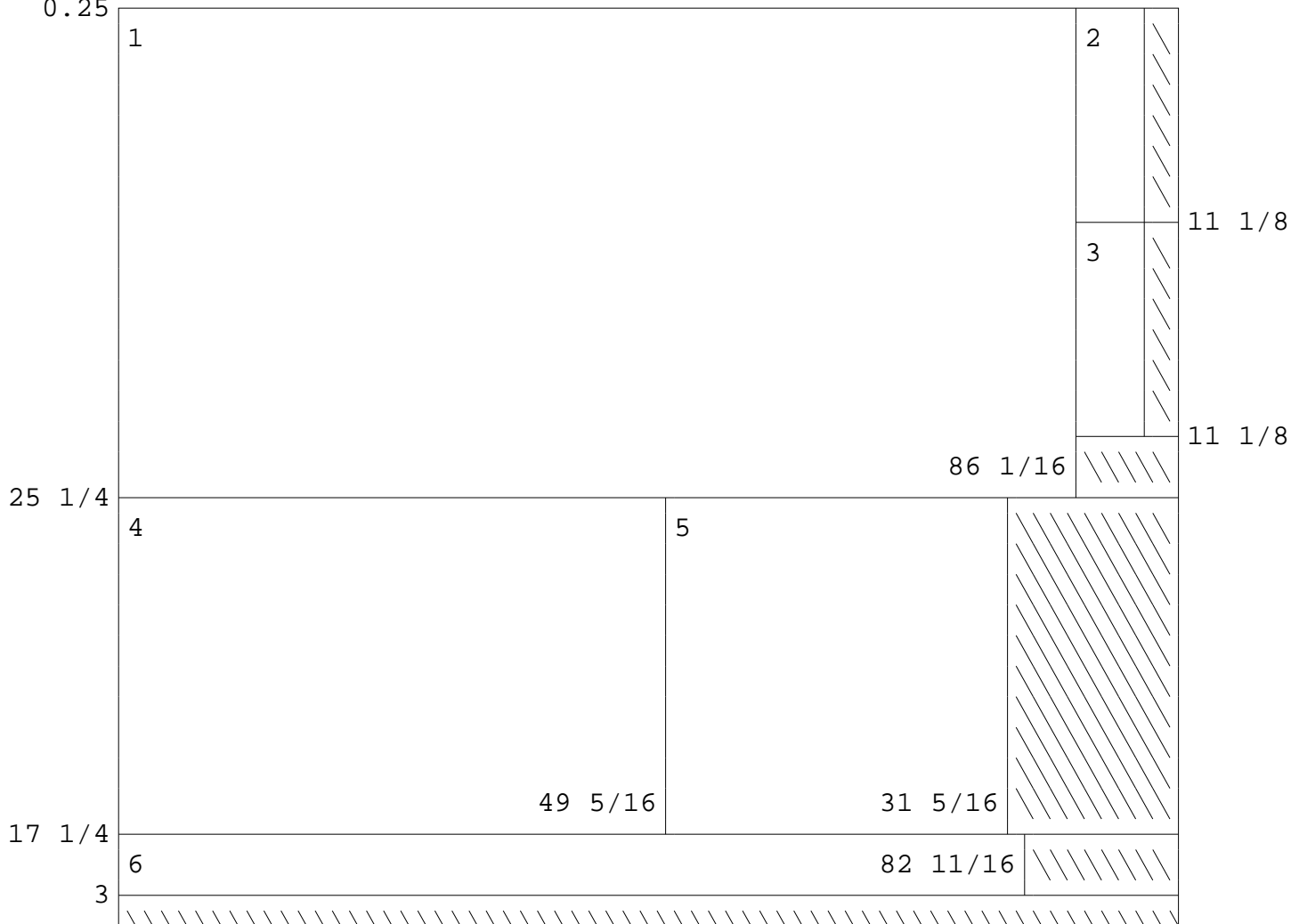
23 1/4

<<= Grain Direction =>>

#:	Width	x	Length	Description	Room-Cabinet	Job Name
1:	23 1/4	x	78 1/2	Bottom	1-3	GRANT
2:	3	x	17 3/8	Fixed Shelf	1-6	GRANT
3:	3	x	17 3/8	Top	1-6	GRANT
4:	3	x	17 3/8	Bottom	1-6	GRANT
5:	2 7/8	x	17 3/16	Adjustable Shelf	1-6	GRANT
6:	2 7/8	x	17 3/16	Adjustable Shelf	1-6	GRANT
7:	2 7/8	x	17 3/16	Adjustable Shelf	1-6	GRANT
8:	2 7/8	x	17 3/16	Adjustable Shelf	1-6	GRANT
9:	23 1/4	x	78	Bottom	1-7	GRANT

Trims: 0.25

0.25



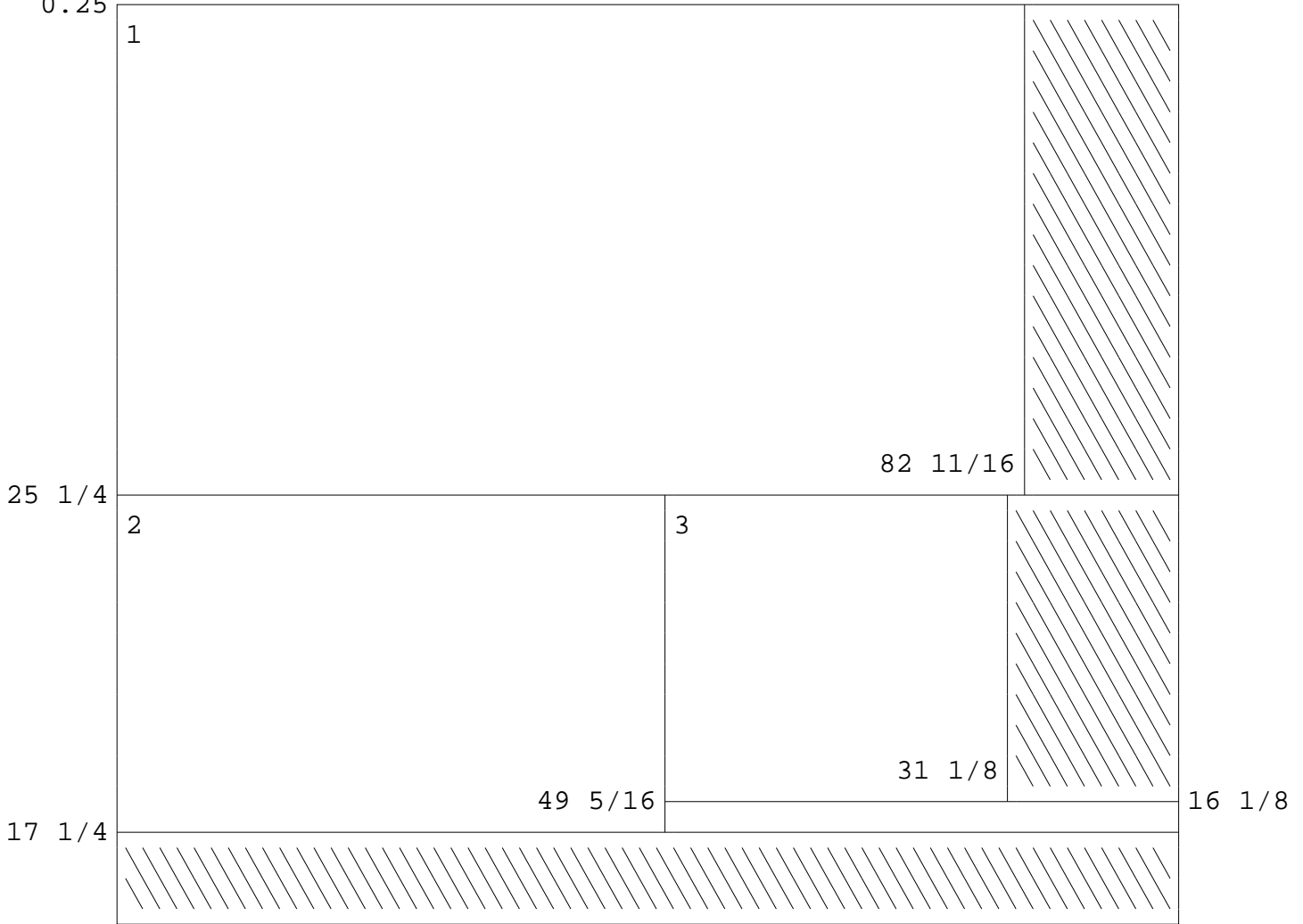
<<= Grain Direction ==>>

#:	Width	x	Length	Description	Room-Cabinet	Job Name
1:	25 1/4	x	86 1/16	Wall Side	1-9	GRANT
2:	11 1/8	x	7 3/16	Adjustable Shelf	1-10	GRANT
3:	11 1/8	x	7 3/16	Adjustable Shelf	1-10	GRANT
4:	17 1/4	x	49 5/16	Wall Side	1-8	GRANT
5:	17 1/4	x	31 5/16	Top	1-8	GRANT
6:	3	x	82 11/16	Wall Side	1-6	GRANT



Trims: 0.25

0.25

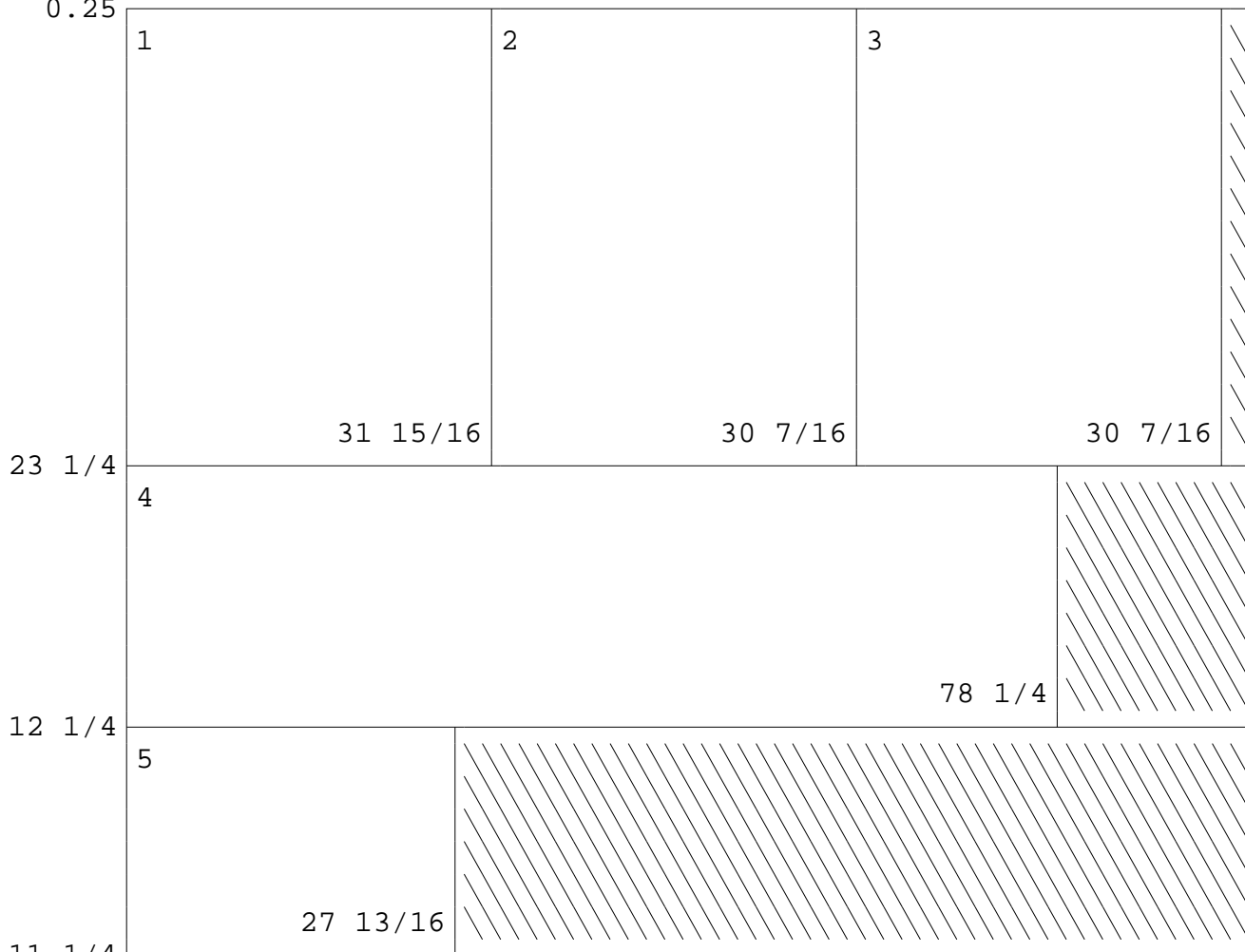


<<= Grain Direction =>>

#:	Width	x	Length	Description	Room-Cabinet	Job Name
1:	25 1/4	x	82 11/16	Wall Side	1-2	GRANT
2:	17 1/4	x	49 5/16	Wall Side	1-8	GRANT
3:	16 1/8	x	31 1/8	Adjustable Shelf	1-8	GRANT

Trims: 0.25

0.25

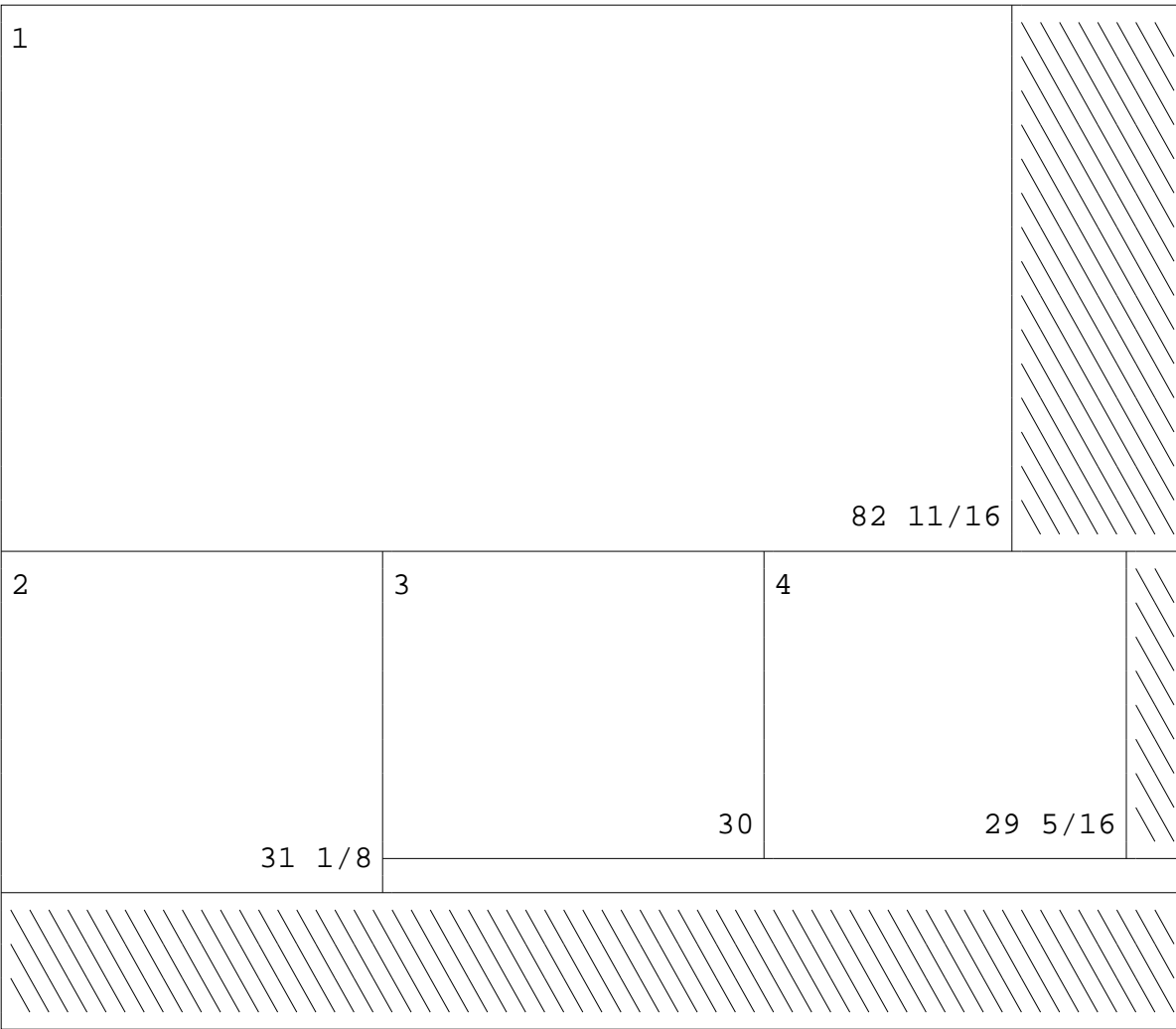


<=< Grain Direction =>>

#:	Width	x	Length	Description	Room-Cabinet	Job Name
1:	23 1/4	x	31 15/16	Wall Side	1-1	GRANT
2:	23 1/4	x	30 7/16	Vert Partition	1-7	GRANT
3:	23 1/4	x	30 7/16	Vert Partition	1-7	GRANT
4:	12 1/4	x	78 1/4	Top	1-10	GRANT
5:	11 1/4	x	27 13/16	Vert Partition	1-10	GRANT

Trims: 0.25

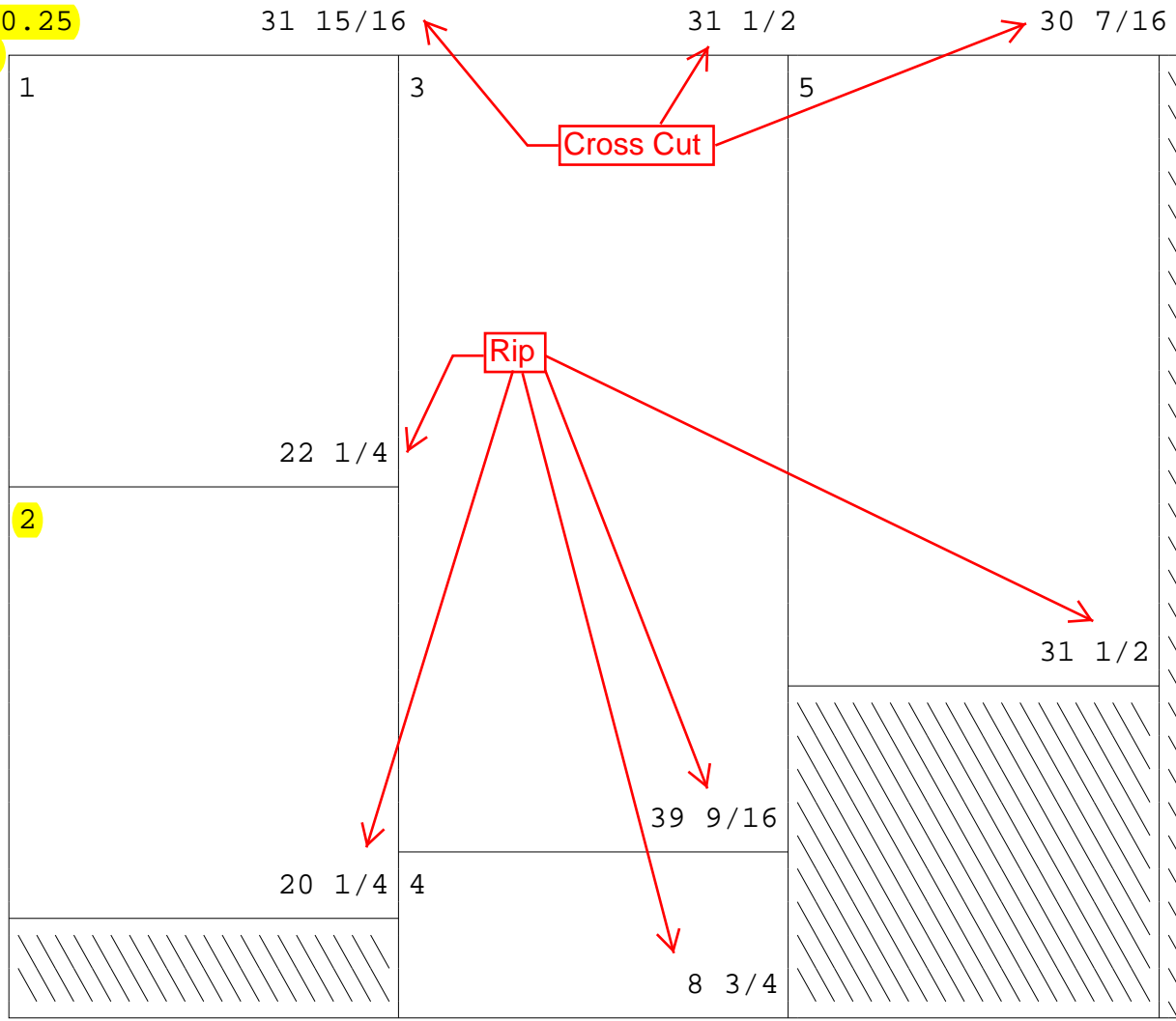
0.25



<=< Grain Direction =>>

#:	Width	x	Length	Description	Room-Cabinet	Job Name
1:	25 1/4	x	82 11/16	Wall Side	1-2	GRANT
2:	16 1/8	x	31 1/8	Adjustable Shelf	1-8	GRANT
3:	12 1/4	x	30	Bottom	1-10	GRANT
4:	12 1/4	x	29 5/16	Wall Side	1-10	GRANT

Trims: 0.25  
0.25



<=< Grain Direction =>>

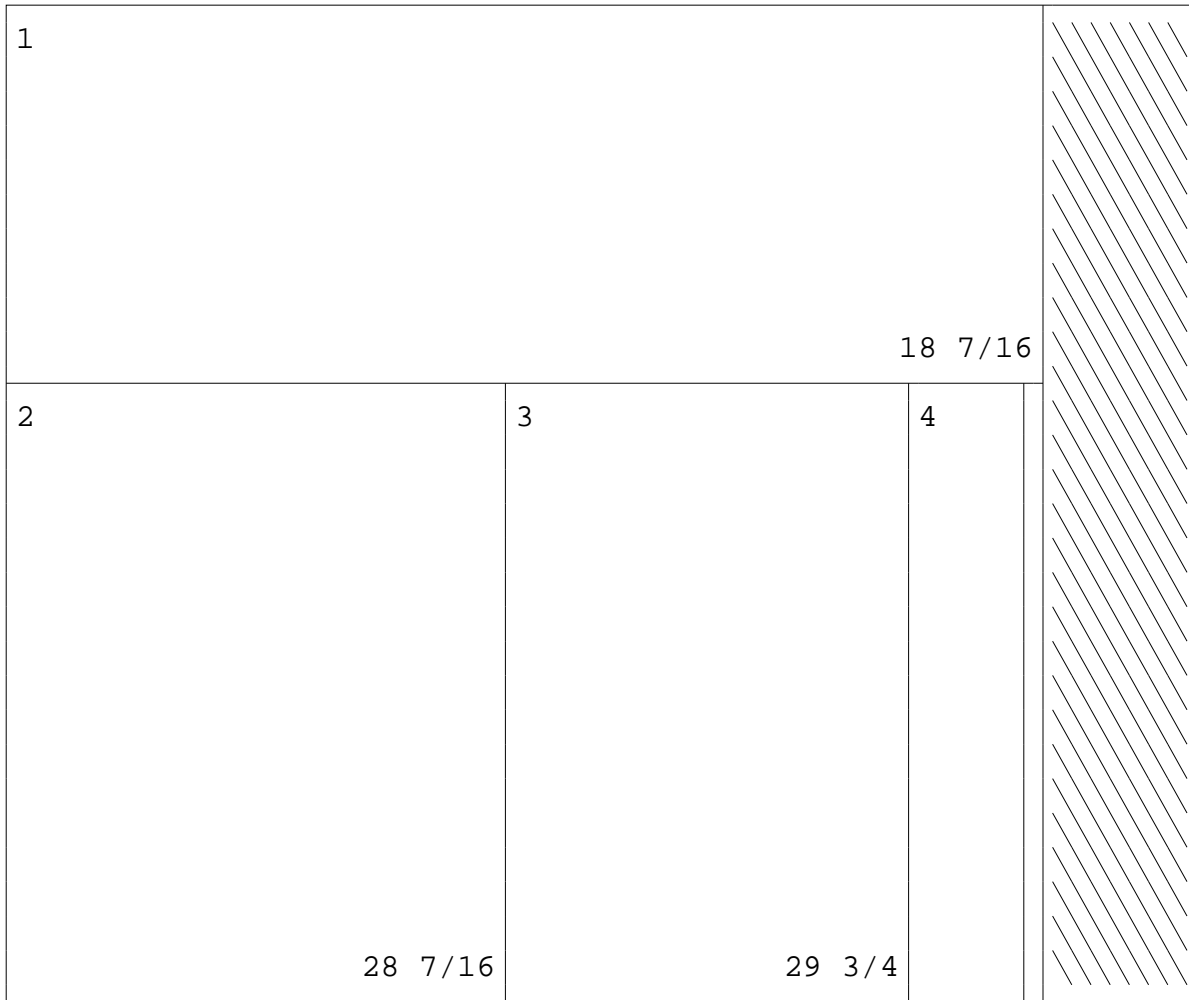
#:	Width	x	Length	Description	Room-Cabinet	Job Name
1:	22 1/4	x	31 15/16	Blank Panel	1-3	GRANT
2:	20 1/4	x	31 15/16	Blank Panel	1-7	GRANT
3:	39 9/16	x	31 1/2	Back Panel	1-3	GRANT
4:	8 3/4	x	31 1/2	Back Panel	1-3	GRANT
5:	30 7/16	x	31 1/2	Back Panel	1-1	GRANT

Please note these  
are cross cut and  
rip combinations

Pay close attention  
to sizes

Trims: 0.25  
0.25

82 11/16

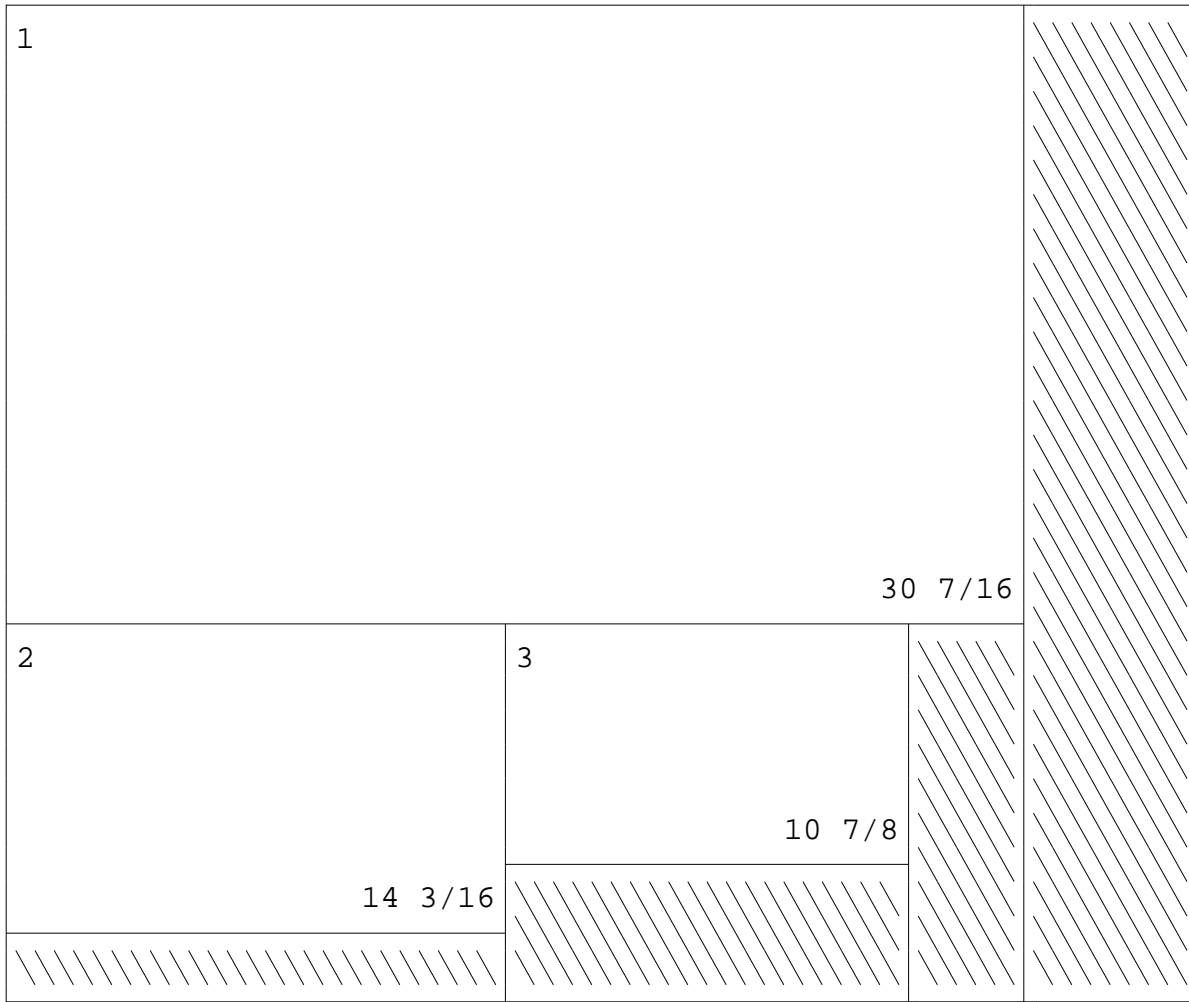


39 1/8                      31 15/16 8 9/16  
<=< Grain Direction =>>

#:	Width	x	Length	Description	Room-Cabinet	Job Name
1:	18 7/16	x	82 11/16	Back Panel	1-6	GRANT
2:	39 1/8	x	28 7/16	Back Panel	1-10	GRANT
3:	31 15/16	x	29 3/4	Back Panel	1-8	GRANT
4:	8 9/16	x	28 7/16	Back Panel	1-10	GRANT

Trims: 0.25  
0.25

81 13/16



37 1/8                      30 5/8  
<=< Grain Direction =>

#:	Width	x	Length	Description	Room-Cabinet	Job Name
1:	30 7/16	x	81 13/16	Back Panel	1-2	GRANT
2:	37 1/8	x	14 3/16	Back Panel	1-9	GRANT
3:	30 5/8	x	10 7/8	Back Panel	1-10	GRANT

Trims: 0.25 30 1/8  
0.25



<<= Grain Direction =>>

#:	Width	x Length	Description	Room-Cabinet	Job Name
1:	30 1/8	x 31 1/2	Back Panel	1-5	GRANT

